

AM.3.H... 2 AND 3 WAY HYDROSTATS CETOP 3



AM.3.H...

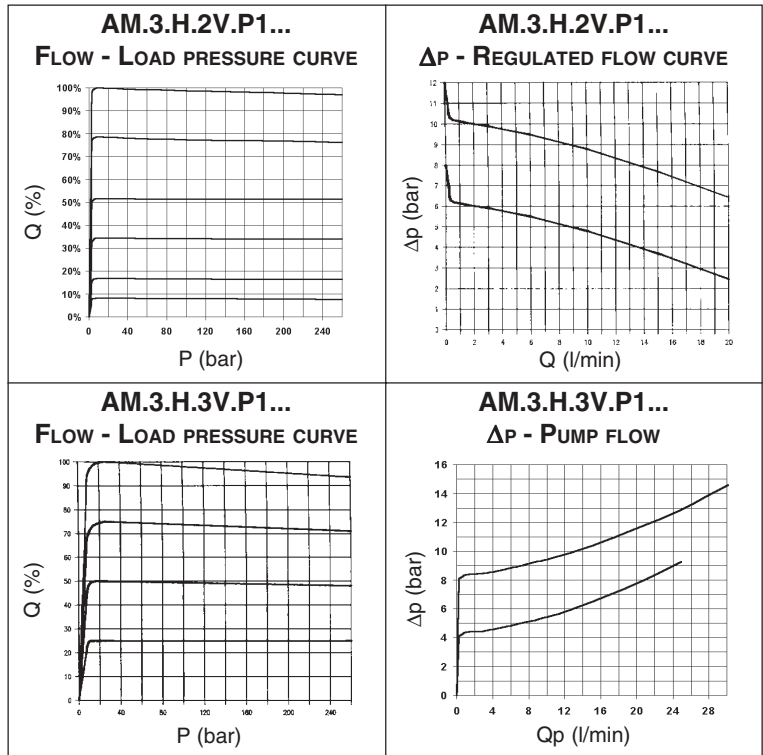
The 2 or 3 way pressure regulator type AM.3.H ensure the constant set flow rate in the presence of varying system load (pressure) by keeping constant the pressure drop ($\Delta p = 4/8$ bar) in relation to the flow rate regulation.

In order to achieve the direction and flow rate dual control function, it is normally used together with a proportional solenoid valve

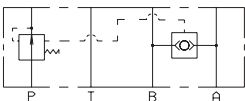
Max. flow	25 l/min
Max. operating pressure	350 bar
Δp adjustment	4 bar 8 bar
Fluid viscosity	10 ÷ 500 mm ² /s
Fluid temperature	-25°C ÷ 75°C
Ambient temperature	-25°C ÷ 60°C
Max. contamination level	class 8 in accordance with NAS 1638 with filter $\beta_{10} \geq 75$
Weight	1,4 Kg

ORDERING CODE

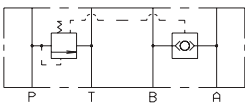
- AM** Modular valve
- 3** CETOP 3/NG6
- H** Hydrostat
- **** **2V** = 2 way
3V = 3 way
- P1** Function at port P
- **** Differential pressure (Δp)
04 = Δp 4 bar
08 = Δp 8 bar
- **** **00** = No variant
V1 = Viton
- 1** Serial No.



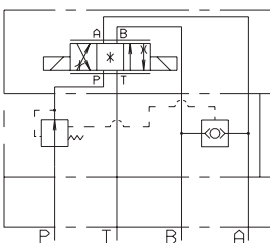
8



AM.3.H.2V.P1...



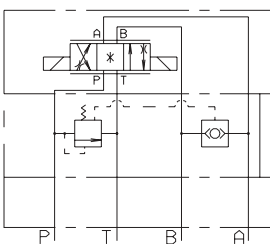
AM.3.H.3V.P1...



Proportional valve XD.3.C...

Hydrostat AM.3.H.2V...

BASE



Proportional valve XD.3.C...

Hydrostat AM.3.H.3V...

BASE

OVERALL DIMENSIONS

