

AM.3.VR... MODULAR REDUCING VALVES WITH RELIEVING - PILOT OPERATED CETOP 3



AM.3.VR...	
CVR.20...	CH. V PAGE 23
SCREWS AND STUDS	CH. IV PAGE 21

These pressure reducing valves ensure a minimum pressure variation on the P or A port with changing flow rate up to 90 l/min.

Three spring types allow adjustment within the range 7 ÷ 250 bar. Manual adjustment is available by a grub screw or plastic knob.

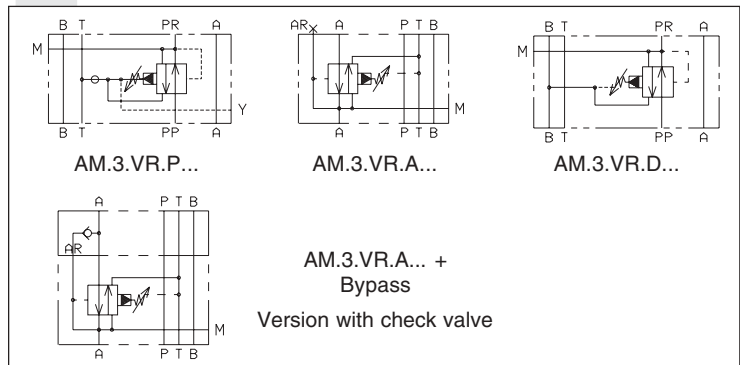
The RELIEVING SYSTEM inside the valve AM3VR allows the passage from the setting pressure line to T line of the flow through the valve to avoid the increasing of pressure in the reduced-pressure line by diverting exceeding flow to reservoir. A bypass module with check valve for free flow from A to AR port (see hydraulic symbol) is available..

Max. operating pressure	350 bar
Setting ranges:	spring 1 max. 60 bar
	spring 2 max. 120 bar
	spring 3 max. 250 bar
Maximum allowed Δp pressure between the inlet an outlet pressure	150 bar
Max. flow	40 l/min
Draining on port T	0,5 ÷ 0,7 l/min
Hydraulic fluids	Mineral oils DIN 51524
Fluid viscosity	10 ÷ 500 mm ² /s
Fluid temperature	-25°C ÷ 75°C
Ambient temperature	-25°C ÷ 60°C
Max. contamination level	class 10 in accordance with NAS 1638 with filter $\beta_{25} \geq 75$
Weight	1,36 Kg
Weight bypass version	2 Kg

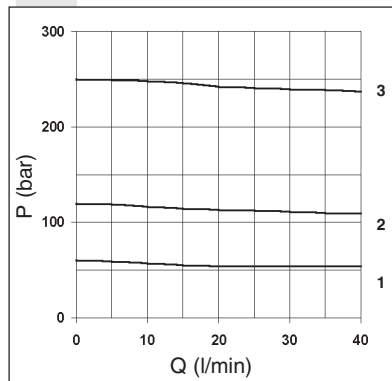
ORDERING CODE

AM	Modular valve
3	CETOP 3/NG6
VR	Pilot operated pressure reducing valve with relieving
*	Control on lines P = Drain on T A = Drain on T D = Drain on B reduct pressure on A
*	Drain connection E = External (only for control on the P line) I = Internal (Standard)
B	Version with bypass on line A only Omit if not required
*	Type of adjustment M = Plastic knob C = Grub screw
*	Setting ranges 1 = max. 60 bar (white spring) 2 = max. 120 bar (yellow spring) 3 = max. 250 bar (green spring)
**	00 = No variant V1 = Viton
1	Serial No

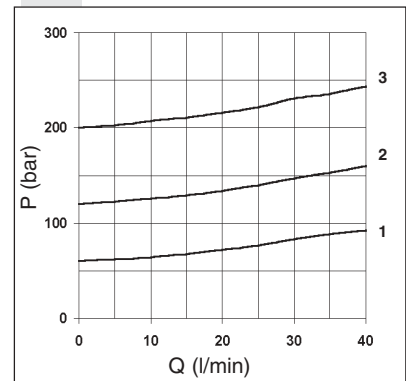
HYDRAULIC SYMBOLS



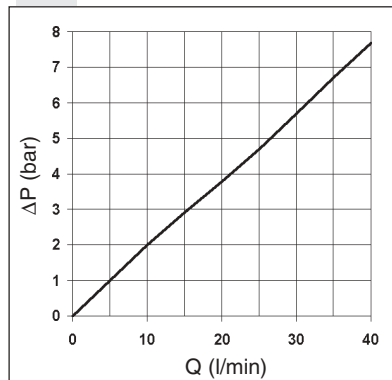
PRESSURE-FLOW RATE



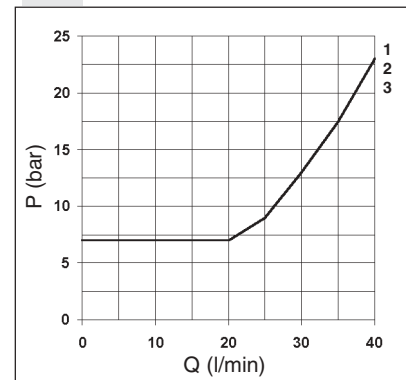
PRESSURE-FLOW OF RELIEVING



ΔP AM.3.VR... + BYPASS



MINIMUM SETTING PRESSURE



Curves n° 1 - 2 - 3 = setting ranges

The fluid used is a mineral oil with a viscosity of 46 mm²/s at 40°C. The tests have been carried out a fluid temperature of 50°C.

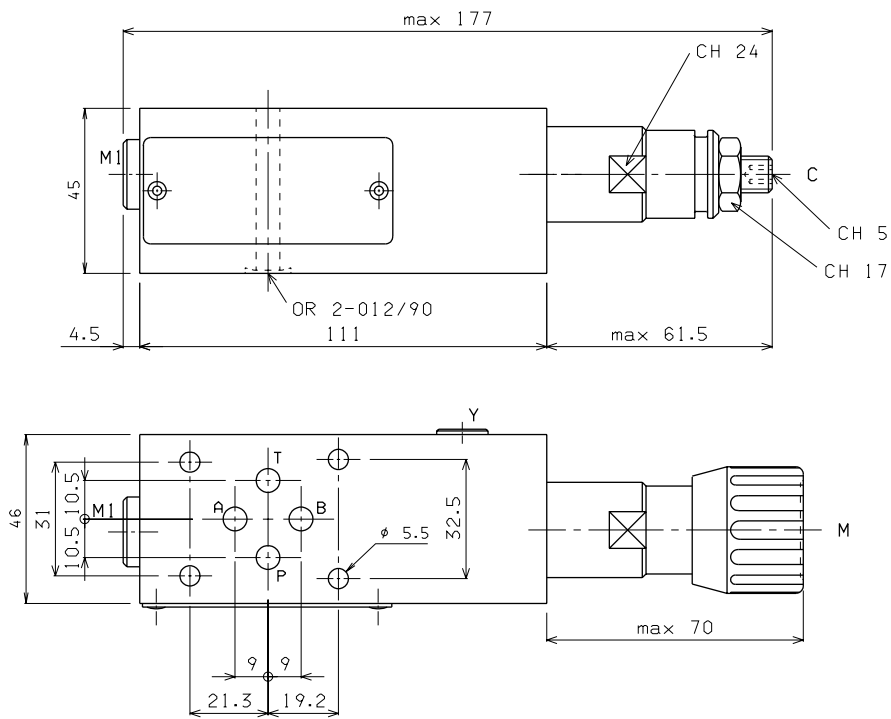
To changes valves AM.3.VR.P... from internal to external drainage it is necessary:

- screw out the plug on the "Y" port
- screw out the plug T.C.E.I. M8x1 from the body
- screw in a screw S.T.E.I. M6
- rescrew the T.C.E.I. M8x1 plug on the body

NOTE: the external draining can be used as a piloting line (please, contact our Technical Service for other informations)

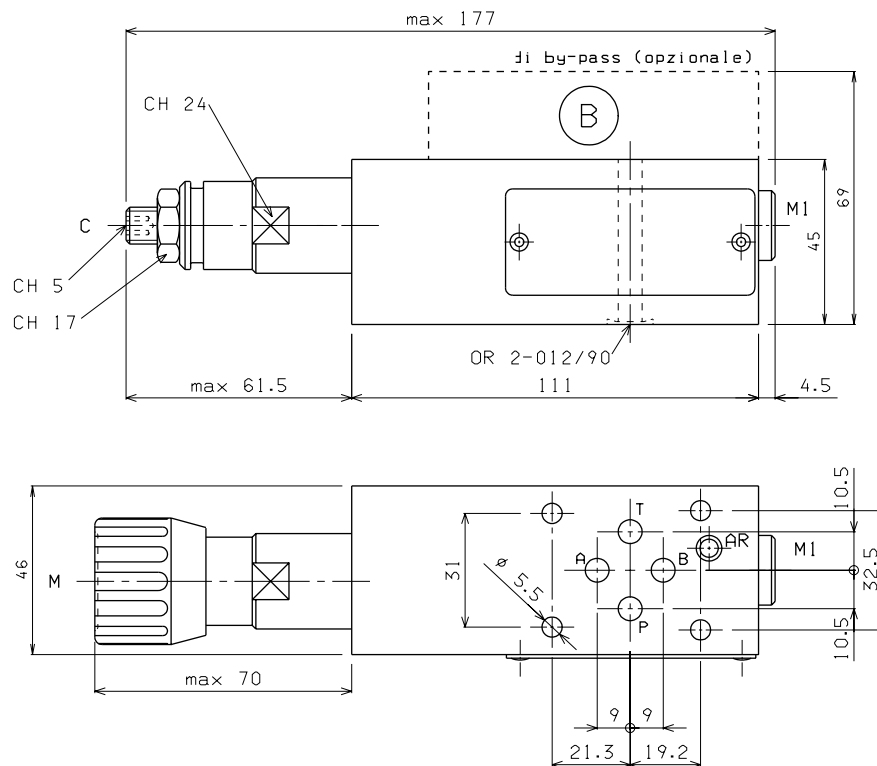
OVERALL DIMENSIONS

AM.3.VR.P... / AM.3.VR.D...



AM.3.VR.A... + BYPASS

Ⓑ Bypass (optional)
Ordering code:
V89.45.000
(if ordered separately)



Type of adjustment

M Plastic knob

C Grub screw

Support plane specifications

