



AM.5.H...

## AM.5.H... 2 AND 3 WAY HYDROSTATS CETOP 5



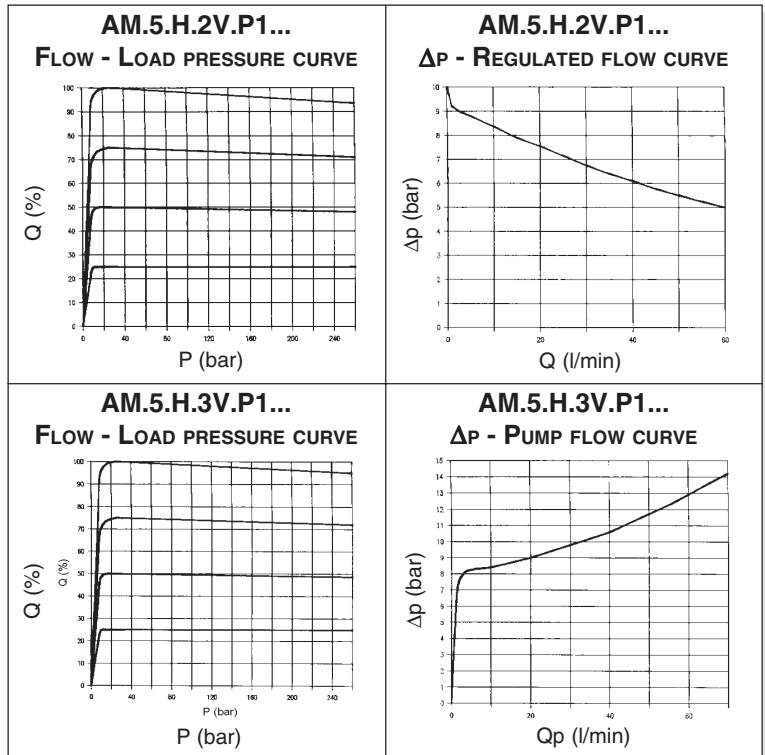
The 2 or 3 way pressure regulator type AM.5.H ensures a constant set flow rate in the presence of varying system load (pressure) by keeping constant the pressure drop ( $\Delta p = 8$  bar) in relation to the flow rate regulation.

In order to achieve the direction and flow rate dual control function, it is normally used together with a proportional solenoid valve.

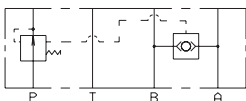
Max. flow AM.5.H.2V...	65 l/min
Max. flow AM.5.H.3V...	70 l/min
Max. operating pressure	350 bar
$\Delta p$ adjustment	8 bar
Fluid viscosity	$10 \div 500 \text{ mm}^2/\text{s}$
Fluid temperature	$-25^\circ\text{C} \div 75^\circ\text{C}$
Ambient temperature	$-25^\circ\text{C} \div 60^\circ\text{C}$
Max. contamination level	class 8 in accordance with NAS 1638 with filter $\beta_{10} \geq 75$
Weight	2,7 Kg

### ORDERING CODE

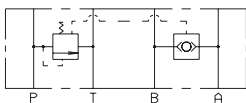
<b>AM</b>	Modular valve
<b>5</b>	CETOP 5/NG10
<b>H</b>	Hydrostat
<b>**</b>	<b>2V</b> = 2 way <b>3V</b> = 3 way
<b>P1</b>	Function at port P
<b>08</b>	Differential pressure ( $\Delta p$ ) $\Delta p$ 8 bar
<b>**</b>	<b>00</b> = No variant <b>V1</b> = Viton
<b>1</b>	Serial No.



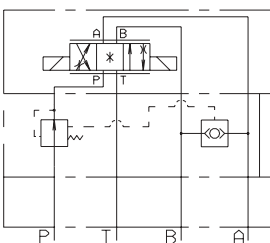
8



AM.5.H.2V.P1...

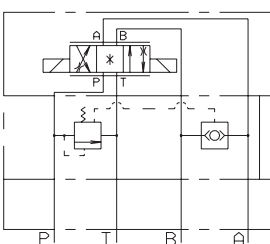


AM.5.H.3V.P1...



Proportional valve  
XD.5.C...  
Hydrostat  
AM.5.H.2V...

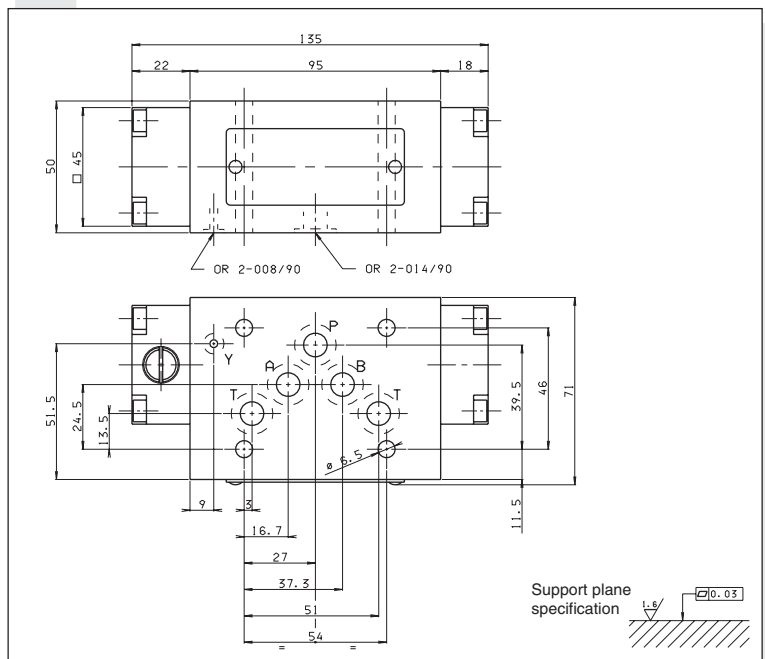
BASE



Proportional valve  
XD.5.C...  
Hydrostat  
AM.5.H.3V...

BASE

### OVERALL DIMENSIONS



Support plane  
specification  $\pm 0.03$