

AM.5.RGT... MODULAR VALVES FOR REGENERATIVE CIRCUIT CETOP 5



AM.5.RGT...

SCREWS AND STUDS

CH. IV PAGE 35

This modular system produces a regenerative circuit to increasing the actuator (differential cylinder) exit speed as shown in the diagram. In particular, if a cylinder is used with a 2:1 ratio for operating surfaces, the exit and re-entry speeds are the same.

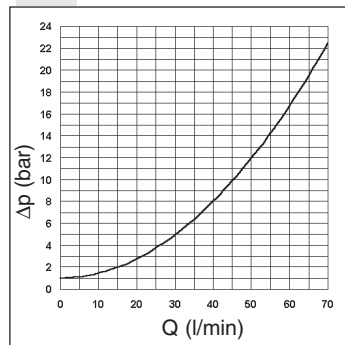
Max. operating pressure	350 bar
Max. flow at port A/B/P/T	70 l/min
Hydraulic fluids	Mineral oils DIN 51524
Fluid viscosity	10 ÷ 500 mm ² /s
Fluid temperature	-25°C ÷ 75°C
Ambient temperature	-25°C ÷ 60°C
Max. contamination level	class 10 in accordance with NAS 1638 with filter $\beta_{25} \geq 75$
Weight	2,1 Kg

4

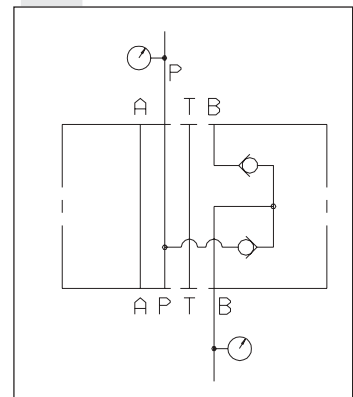
ORDERING CODE

- AM** Modular valve
- 5** CETOP 5/NG10
- RGT** For regenerative circuit
- A** Size of check valves 1/2"BSP
- 1** Opening pressure 1 bar
- **** **00** = No variant
V1 = Viton
- 1** Serial No.

PRESSURE DROPS B→P



HYDRAULIC SYMBOL



OVERALL DIMENSIONS

