

# AM.5.SH... MODULAR SHUTTLE VALVES CETOP 5



### AM.5.SH...

SH.03... CH. V PAGE 16  
SCREWS AND STUDS CH. IV PAGE 35

Modular valves type AM.5.SH are actuator load pressure selecting units, as they are fitted with an integral shuttle valve cartridge which allows taking of the highest pressure signal to the external port via displacement of a ball. They are usually employed to signal the actuator load to the pressure compensator of a load sensing pump, or for the command of fail-safe brakes. For seat overall dimensions see cartridge shuttle type SH.03.

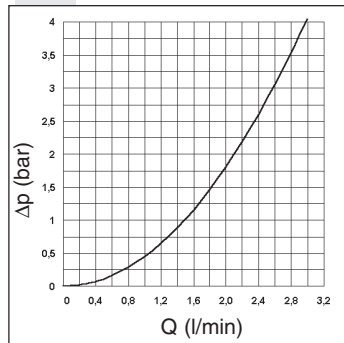
Max. operating pressure	350 bar
Max. flow at the cartridge	3 l/min
Max. flow at ports A/B/P/T	80 l/min
Hydraulic fluids	Mineral oils DIN 51524
Fluid viscosity	10 ÷ 500 mm <sup>2</sup> /s
Fluid temperature	-25°C ÷ 75°C
Ambient temperature	-25°C ÷ 60°C
Max. contamination level	class 10 in accordance with NAS 1638 with filter $\beta_{25} \geq 75$
Weight	2,1 Kg
Cartridge tightening torque	20÷30 Nm/2÷3 Kgm

4

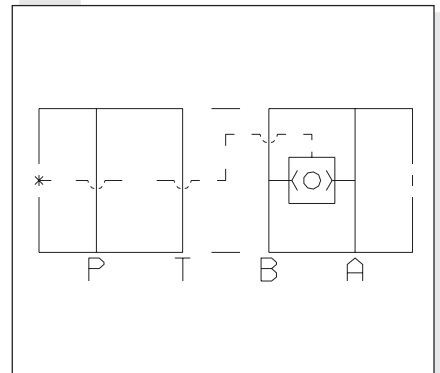
### ORDERING CODE

- AM** Modular valve
- 5** CETOP 5/NG10
- SH** Cartridge shuttle
- \*\*** **00** = No variant  
**V1** = Viton
- 1** Serial No.

### PRESSURE DROPS ( $\Delta p$ ) ON THE SHUTTLE VALVE



### HYDRAULIC SYMBOL



### OVERALL DIMENSIONS

