

AM.5.VS... MODULAR PRESSURE SEQUENCING VALVES CETOP 5



AM.5.VS...

CVS.20... CH. V PAGE 24

SCREWS AND STUDS CH. IV PAGE 35

The sequence valve are used to assure that a secondary circuit is pressurized when the setting pressure with a changing flow to up 90 l/min (see diagram).

Three spring types allow adjustment within the range 7 ÷ 250 bar. Manual adjustment is available by a grub screw or plastic knob.

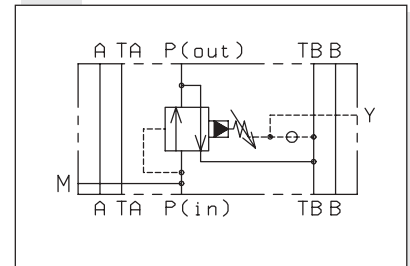
The cartridge used is the "CVS" type.

Max. operating pressure	350 bar
Setting ranges:	spring 1 60 bar
	spring 2 120 bar
	spring 3 250 bar
Max. flow	90 l/min
Draining on port T	0,5 ÷ 0,7 l/min
Hydraulic fluids	Mineral oils DIN 51524
Fluid viscosity	10 ÷ 500 mm ² /s
Fluid temperature	-25°C ÷ 75°C
Ambient temperature	-25°C ÷ 60°C
Max. contamination level	class 10 in accordance with NAS 1638 with filter $\beta_{25} \geq 75$
Weight	3,73 Kg

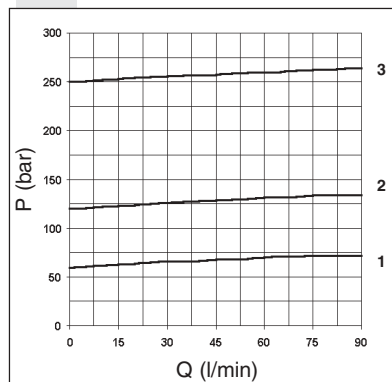
ORDERING CODE

AM	Modular valve
5	CETOP 5/NG10
VS	Sequencing valve
*	Drain connection E = External I = Internal (Standard)
*	Type of adjustment M = Plastic knob C = Grub screw
*	Setting ranges 1 = max. 60 bar (white spring) 2 = max. 120 bar (yellow spring) 3 = max. 250 bar (green spring)
**	00 = No variant V1 = Viton
1	Serial No.

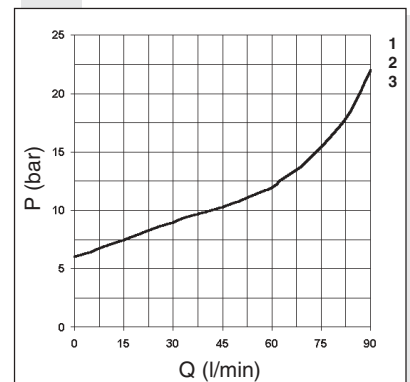
HYDRAULIC SYMBOL



PRESSURE-FLOW RATE



MINIMUM SETTING PRESSURE



Curves n° 1 - 2 - 3 = setting ranges

The fluid used is a mineral oil with a viscosity of 46 mm²/s at 40°C. The tests have been carried out a fluid temperature of 50°C.

To change valves AM.5.VS... from internal to external drainage it is necessary:

- screw out the plug on the Y port
- screw out the plug T.C.E.I. M8x1 from the body
- screw in a screw S.T.E.I. M6
- rescrew the T.C.E.I. M8x1 plug on the body

NOTE: the external draining can be used as a piloting line (please, contact our Technical Service for other informations)

OVERALL DIMENSIONS

