

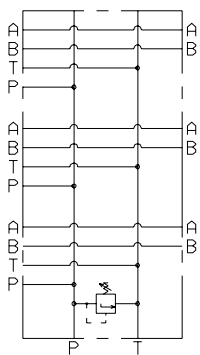
BM.5.**...

BM	Multi station subplate (standard versions are supplied in cast iron material)
5	CETOP 5/NG10
**	50 = Connected in parallel with pressure relief valve and rear connectors 60 = Connected in parallel without pressure relief valve and side connectors 70 = Connected in parallel with pressure relief valve and 3/4" BSP P/T connectors and 1/2" BSP side A/B 80 = Connected in parallel with pressure relief valve and 1" BSP P/T connectors and 3/4" BSP side A/B
*	No. of valves seats (for BM.5.80... max 6) 2 / 3 / 4 / 5 / 6 / 7 / 8
*	Type of adjustment (omit for 60 version) M = Plastic knob C = Grub screw
*	Setting range (omit for 60 version) 1 = max. 50 bar (white spring) 2 = max. 140 bar (yellow spring) 3 = max. 350 bar (green spring)
**	00 = No variant AL = in aluminium material (only for BM560 and BM570 versions)
1	Serial No.

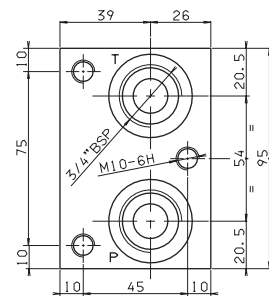
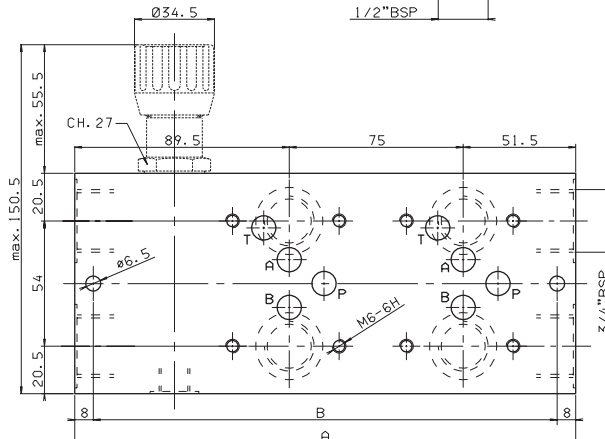
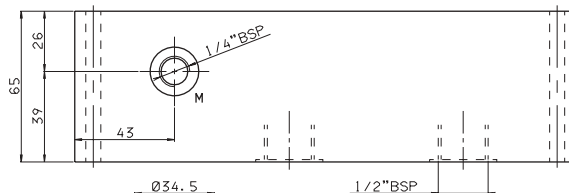
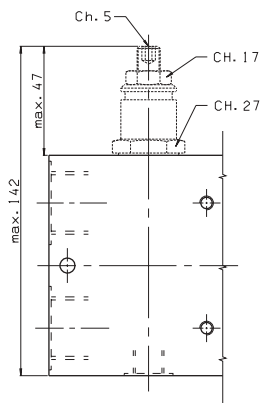
• The minimum permissible setting pressure is the same for all spring: see cartridge valve type CMP.30...

BM.5.50 CONNECTED IN PARALLEL WITH PRESSURE RELIEF VALVE

7



Type	A	B	Weight (Kg)
BM.5.50/2	216	200	8,5
BM.5.50/3	291	275	11,3
BM.5.50/4	366	350	14
BM.5.50/5	441	425	16,8
BM.5.50/6	516	500	19,5
BM.5.50/7	591	575	22,3
BM.5.50/8	666	650	25



Fixing screws M6x75 UNI 5931

