

CDL.06.6... STACKABLE CIRCUIT SELECTOR VALVES



The stackable circuit selector valves, type CDL.06.6, allows one single drive of 6 users with 5 elements connected in series.
As they are moved from high performances solenoids they don't need the external drainage.
This valves can manage high hydraulic powers with a minimal pressure drop.

Max. pressure	250 bar
Max. flow	50 l/min
Overlap	negative
Hydraulic fluids	Mineral oils DIN 51524
Fluid viscosity	10 ÷ 500 mm ² /s
Fluid temperature	-25°C ÷ 75°C
Ambient temperature	-25°C ÷ 60°C
Max. contamination level	class 10 in accordance NAS with 1638 with filter β ₂₅ ≥ 75
Weight	see "Overall dimension"

CDL.06.6...	
"40W" DC COILS	CH. I PAGE 68
CONNECTORS STANDARD	CH. I PAGE 19

ORDERING CODE

- CDL** Stackable circuit selector valve
- 06** Size NG06
- 6** No. of way (single element)
- W** Threaded connectors 3/8" BSP
- I** Internal drainage
- *** No. of elements: 1/2/3/4/5
- *** Voltage (Tab. 1)
- **** Variants (Tab. 2)
- 1** Serial No.

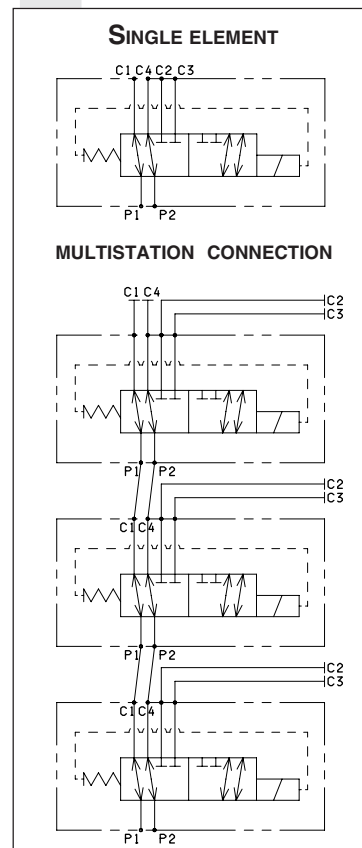
TAB.1 - 40W COIL

DC VOLTAGE	
L	12V
M	24V
W	Without DC coil
Voltage codes are not stamped on the plate, they are readable on the coils.	

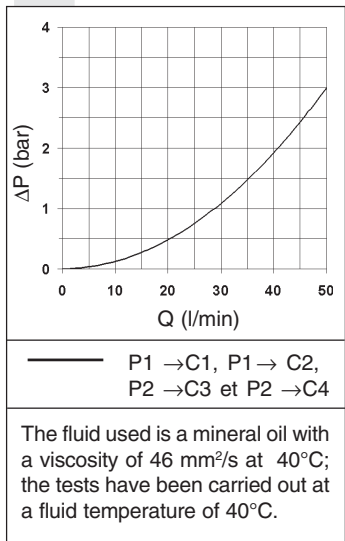
TAB.2 - VARIANTS

No variant	00
(connectors as in the drawing)	
Viton	V1
Pilot light	X1
Rectifier	R1
Valve without connector (coil)	S1
Viton + Pilot light	VX
Viton + Rectifier	VR
Pilot light + Rectifier	XR
Emergency button	E1
Rotary emergency button	P1
Raccordements Deutsch DT04-2P	CZ

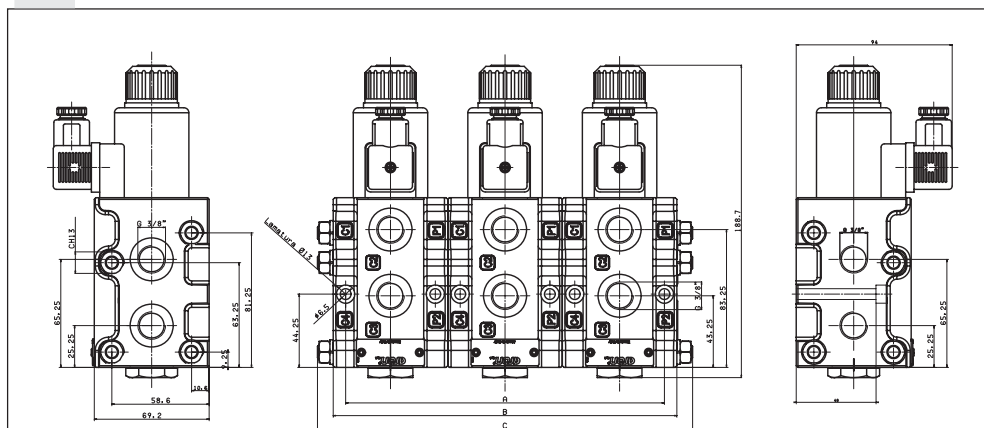
HYDRAULIC SYMBOLS



PRESSURE DROPS



OVERALL DIMENSIONS



No. of elements	No. of way	Lengths (mm)			Weight (Kg)	Kit spare part code* (rods and studs)
		A	B	C		
1	06	54	69	-	3	/
2	08	123	138	160	6,3	V89.56.0001
3	10	192	207	226	9,3	V89.56.0002
4	12	261	276	296	12,3	V89.56.0003
5	14	330	345	365	25,3	V89.56.0004

(*) For multiple composition rods and studs are available.