

## CM02.3.P... MODULAR PILOT OPERATED

### CHECK STACKABLE VALVES

CM02.3.P type modular check stackable valves allow one way free flow by raising a conical shutter, while in the opposite direction the fluid can return by means of a small piston piloted by the pressure in the other line.

They are available on single A or B lines, and on double A and B lines (see hydraulic symbols).

Max. operating pressure	250 bar
Minimum opening pressure spring 1	1 bar
Minimum opening pressure spring 5	5 bar
Piloting ratio:	1:4
Max. flow	15 l/min
Hydraulic fluids	Mineral oils DIN 51524
Fluid viscosity	10 ÷ 500 mm <sup>2</sup> /s a 50°C
Fluid temperature	-20°C ÷ 75°C
Max. contamination level	class 10 in accordance with NAS 1638 with filter β <sub>25</sub> ≥ 75
Weight	0,692 Kg

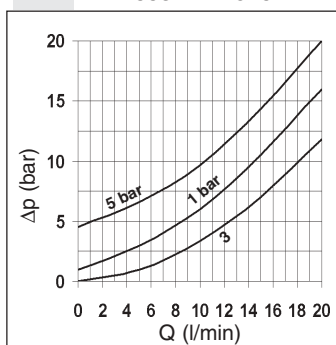


CM02.3.P...

#### ORDERING CODE

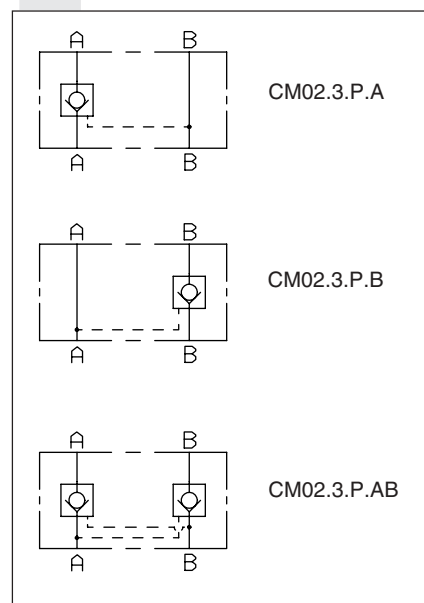
<b>CM02</b>	Modular stackable valve (Q max 15 l/min)
<b>3</b>	Size
<b>P</b>	Piloted check valve
<b>*</b>	Port sizes: 1 = G3/8" 2 = 9/16-18UNF
<b>**</b>	Control on lines <b>A / B / AB</b>
<b>*</b>	Minimum opening pressure 1 = 1 bar 5 = 5 bar
<b>**</b>	<b>00</b> = No variant <b>V1</b> = Viton
<b>1</b>	Serial No.

#### PRESSURE DROPS

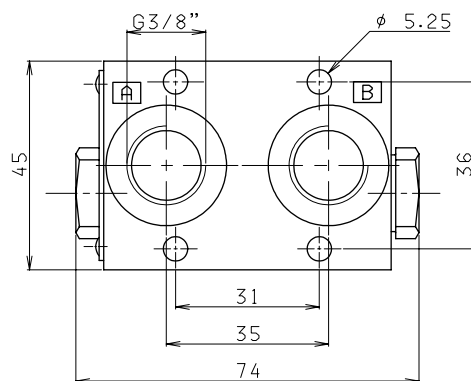
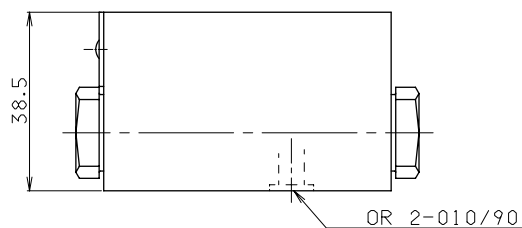
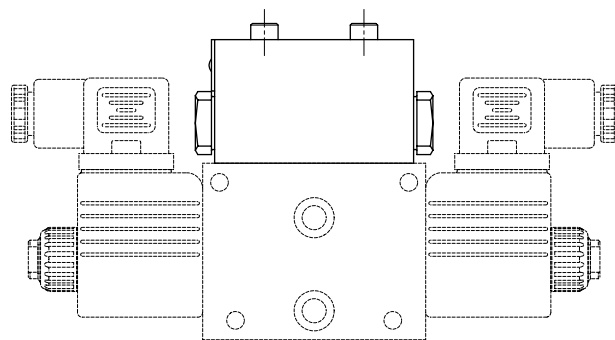


Curve n. 3 = Piloted side flow

#### HYDRAULIC SYMBOLS



#### OVERALL DIMENSIONS AND MOUNTING



Fixing screws UNI 5931 M5x45  
with material specifications min. 8.8  
Tightening torque 5 Nm / 0.5 Kgm