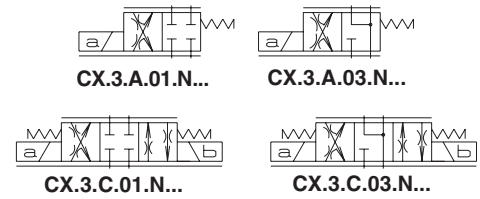


CX.3.A... / CX.3.C... SOLENOID OPERATING PROPORTIONAL CONTROL STACKABLE VALVES



CX.3.A./CX.3.C.. series valves are used for controlling fluid direction and flow rate as a function of the supply current to the proportional control solenoid.

The individual valve is available in two different sizes: G3/8" or 9/16-18UNF.



CX.3...

| | |
|---------------------------|----------------|
| INDIVIDUAL VALVE | CH. XI PAGE 12 |
| STACKABLE VALVES | CH. XI PAGE 13 |
| "D15P" PROPORT. SOLENOIDS | CH. XI PAGE 13 |
| SCREWS AND STUDS | CH. XI PAGE 10 |
| REM.S.RA... | CH. IX PAGE 4 |
| REM.D.RA... | CH. IX PAGE 7 |
| SE.3.AN21.00... | CH. IX PAGE 11 |

OPERATING SPECIFICATIONS

| | |
|---|--|
| Max. operating pressure ports P/A/B | 250 bar |
| Max. operating pressure ports T - for dynamic pressure see note (*) | 250 bar |
| Regulated flow rate | 3 / 10 / 15 / 20 l/min |
| Relative duty cycle | Continuous 100% ED |
| Type of protection | IP 65 |
| Fluid viscosity | 10 ÷ 500 mm ² /s |
| Fluid temperature | -20°C ÷ 75°C |
| Max. contamination level | class 8 in accordance with NAS 1638 with filter β ₁₀ ≥ 75 |
| Weight CX.3.A... (single solenoid) | 1,389 Kg |
| Weight CX.3.C... (double solenoid) | 1,778 Kg |

| | | | |
|---|----------|---------|----------|
| Max. current | 2.35A | 1.76 A | 0.88 A |
| Solenoid coil resistance at 25°C (77°F) | 2.25 Ohm | 4.0 Ohm | 16.0 Ohm |

(*) Pressure dynamic allowed for 2 millions of cycles.

• Operating specifications are valid for fluid with 46 mm²/s viscosity at 40°C, using the specified ARON electronic control units.

ORDERING CODE

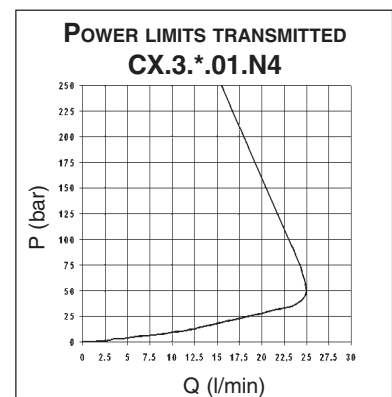
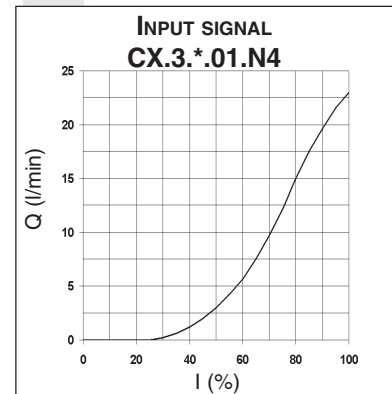
- CX** Proportional control stackable valve
- 3** Size
- *** A = Single solenoid
C = Double solenoid
- *** Body type:
A = Ports G3/8" parallel
B = Ports 9/16 - 18UNF parallel
G = Presetting for modular valves (parallel)
- **** Type of spool
01 = 03 =
- N** Symmetrical flow path control (see symbols table)
- *** Flow rating l/min (Δp 5 bar)
1 = 3 l/min
2 = 10 l/min
3 = 15 l/min
4 = 20 l/min
- *** Max. current at solenoid:
E = 2.35 A
F = 1.76 A
G = 0.88 A
- **** 00 = No variant
V1 = Viton
E1 = Emergency button
P1 = Rotary emergency
P5 = Rotary emergency 180°
- 1** Serial No.

ELECTRONIC CONTROL UNIT

REM.S.RA. and REM.D.RA.****
Card type control for single and double solenoid

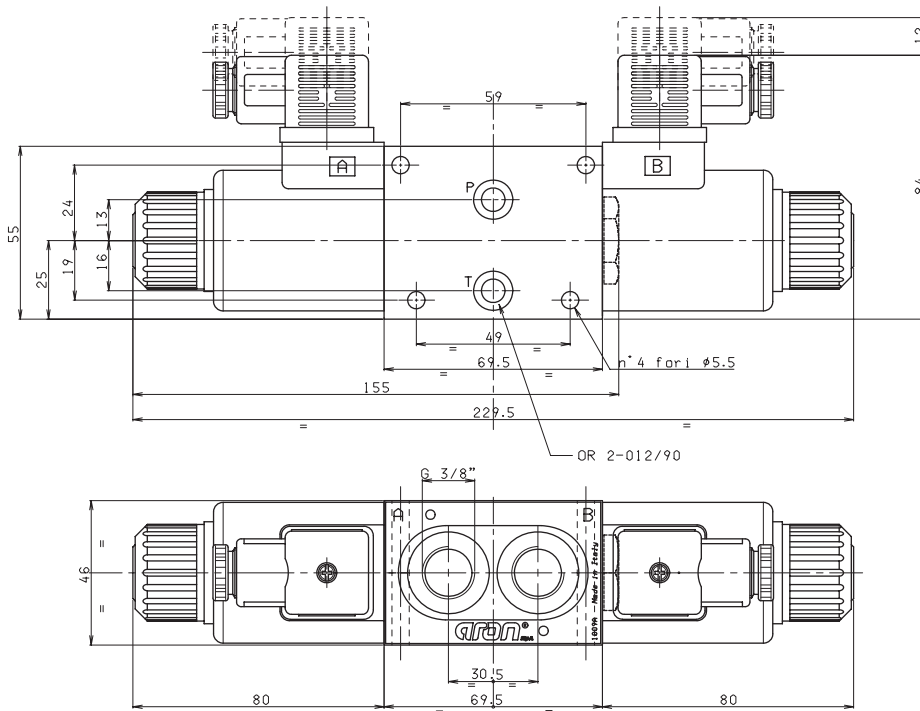
SE.3.AN.21.00...
EUROCARD type control for single and double solenoid

DIAGRAMS



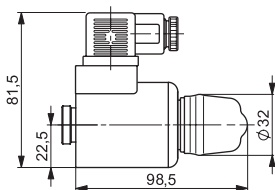
The fluid used is a mineral based oil with a viscosity of 46 mm²/s at 40°C. The tests have been carried out at with a fluid of a 40°C.

OVERALL DIMENSIONS

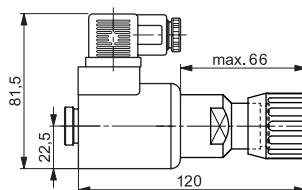


G 3/8" fittings, max. tightening torque = 36 Nm / 3.6 kgm

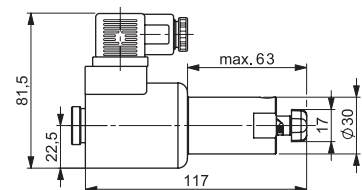
**E1 MANUAL
EMERGENCY**



**P1 ROTARY
EMERGENCY**

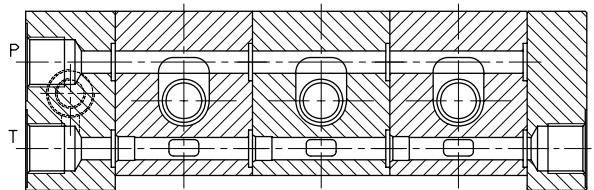
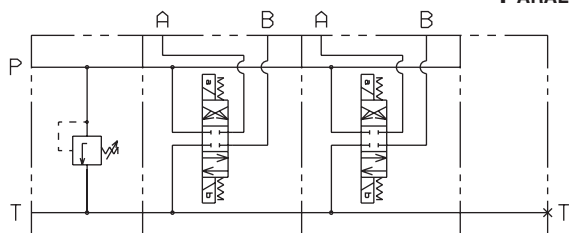


**P5 ROTARY
EMERGENCY 180°**



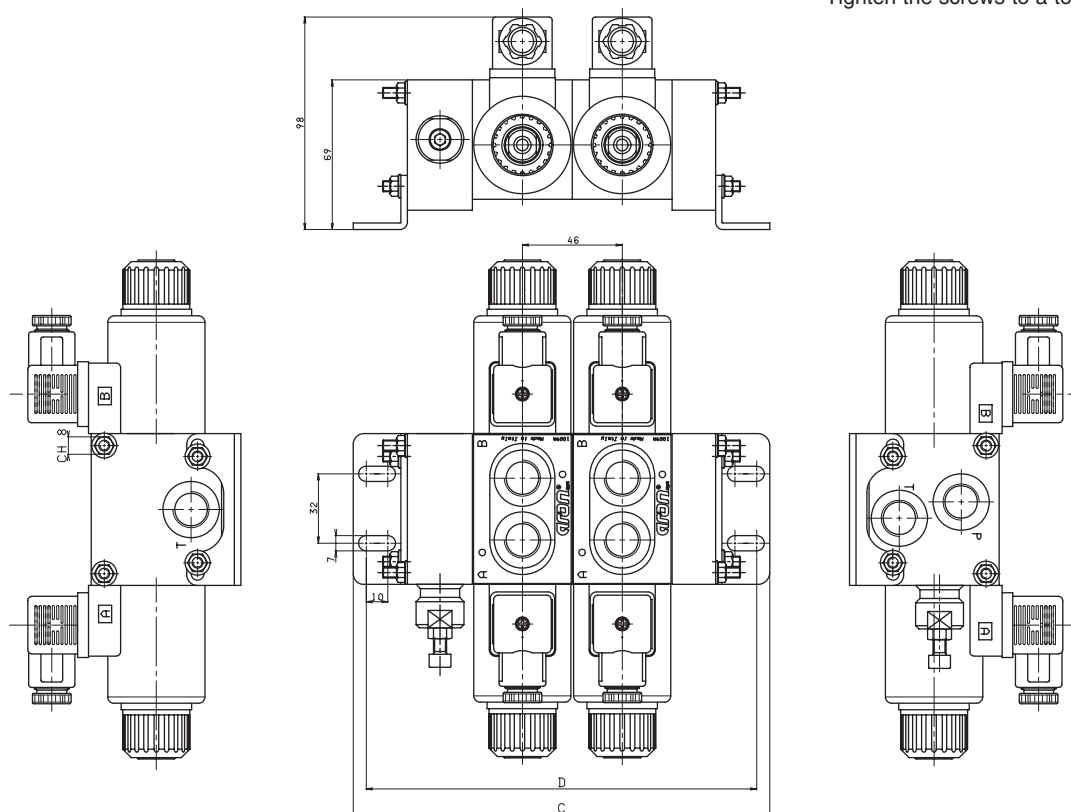
HYDRAULIC SYMBOLS AND INSTRUCTION OF CONNECTION

PARALLEL CONNECTION



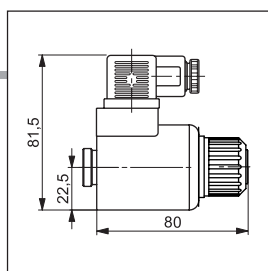
OVERALL DIMENSIONS

Tighten the screws to a torque of 5 Nm



| No. ELEMENTS | FE02-FE INLET MODULE | | FE 10 INLET MODULE | |
|--------------|----------------------|-------------|--------------------|-------------|
| | C | LENGTH (mm) | C | LENGTH (mm) |
| 2 | 192 | 180 | 202 | 190 |
| 3 | 238 | 226 | 248 | 236 |
| 4 | 284 | 272 | 294 | 282 |
| 5 | 330 | 318 | 340 | 328 |
| 6 | 376 | 364 | 386 | 374 |

11



"D15P" PROPORTIONAL SOLENOIDS



| | |
|--|----------|
| Type of protection (in relation to connector used) | IP 66 |
| Duty cycle | 100% ED |
| Insulation class | H |
| Weight (coil) | 0,354 Kg |
| Weight (solenoid) | 0,608 Kg |

ETD15P - 01/2002/e