

PV*.3 / PV*.U.3 PRESSURE REDUCING AND SEQUENCING VALVES CETOP 3/NG6



PVR.3 / PVS.3...

These subplate mounting piloted type pressure reducing and sequencing valves ensure a minimum variation in their calibrated pressure value with changing flow rate.

They are normally supplied with internal piloting and internal drainage on B, but they are already provided with a hole on the front cover to allow for external drainage.

They are available with two different types of adjustment and three calibrated ranges that cover pressure 7 ÷ 250 bar, with and without check valve.

The adjustment is carried out by means of a grub screw or a metric plastic knob.

Max. pressure	320 bar
Setting ranges	Spring 1 max. 60 bar Spring 2 max. 120 bar Spring 3 max. 250 bar
Maximum allowed Δp pressure between the inlet and outlet pressure (PVR only)	150 bar
Max. flow	40 l/min
Draining on port T	0.5 ÷ 0.7 l/min
Hydraulic fluids	Mineral oils DIN 51524
Fluid viscosity	10 ÷ 500 mm ² /s
Fluid temperature	-25°C ÷ 75°C
Ambient temperature	-25°C ÷ 60°C
Max. contamination lever	class 10 in accordance with NAS 1638 with filter $\beta_{25} \geq 75$
Weight (without check valve)	1,5 Kg
Weight (with check valve)	2 Kg

ORDERING CODE

PV*

R = Reducing valve
S = Sequencing valve

U

Check valve
(omit if not required)

3

CETOP 3/NG6

*

Type of adjustment:
M = Plastic knob
C = Grub screw

*

Setting ranges
1 = max. 60 bar (**white spring**)
2 = max. 120 bar (**yellow spring**)
3 = max. 250 bar (**green spring**)

**

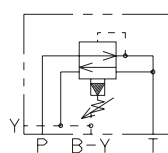
00 = No variant
V1 = Viton

1

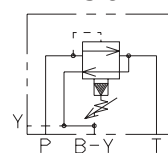
Serial No.

HYDRAULIC SYMBOLS

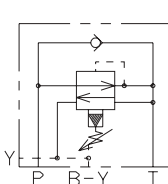
PVR.3...



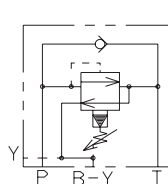
PVS.3...



PVR.U.3...

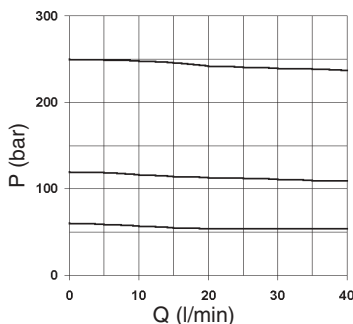


PVS.U.3...

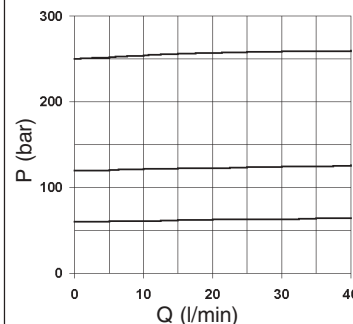


DIAGRAMS

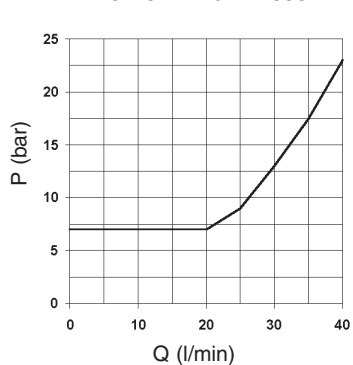
PVR.3... / PVR.U.3...
PRESSURE - FLOW RATE



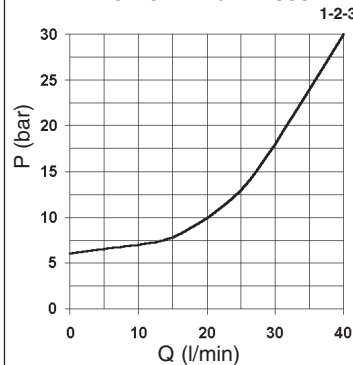
PVS.3... / PVS.U.3...
PRESSURE - FLOW RATE



PVR.3... / PVR.U.3...
MINIMUM SETTING PRESSURE



PVS.3... / PVS.U.3...
MINIMUM SETTING PRESSURE 1-2-3



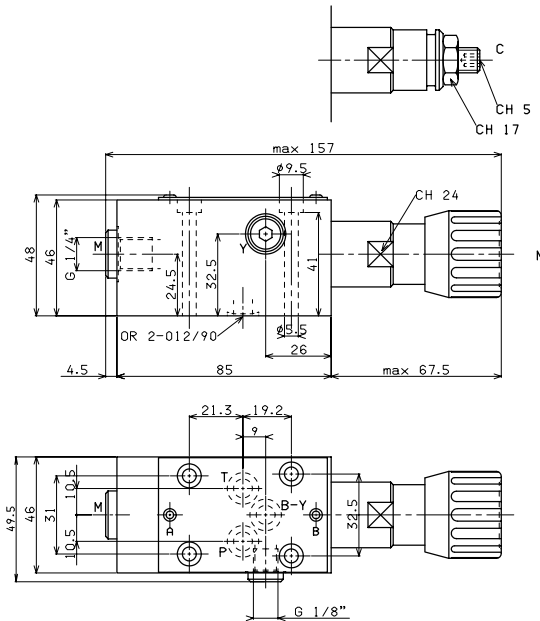
Curves n° 1 - 2 - 3 = setting ranges

The fluid used is a mineral oil with viscosity of 46 mm²/s at 40°C. The tests were carried out at a fluid temperature of 50°C.

OVERALL DIMENSIONS

REDUCING VALVE
PVR.3... CETOP 3/NG6

SEQUENCING VALVE
PVS.3... CETOP 3/NG6

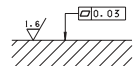


Type of adjustment

- M Plastic knob
- C Grub screw

Fixing screws UNI 5931 M5x50
with material specifications min. 8.8
Tightening torque 5 Nm / 0.5 Kgm

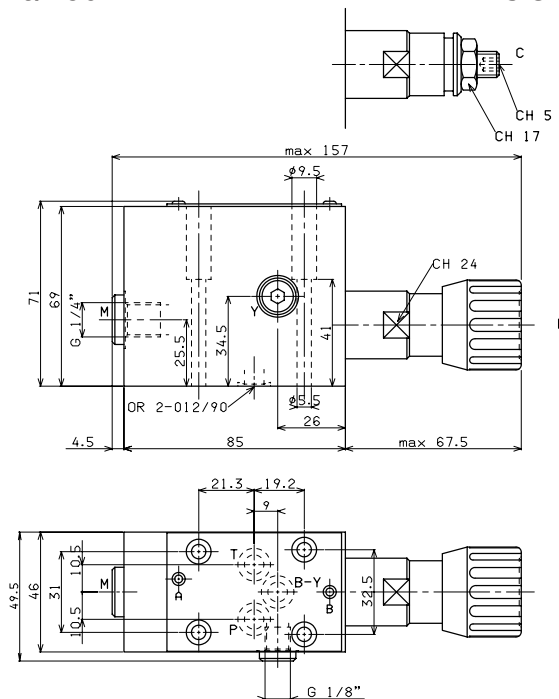
Support plane
specifications



OVERALL DIMENSIONS

REDUCING VALVE WITH CHECK VALVE
PVR.U.3... CETOP 3/NG6

SEQUENCING VALVE WITH CHECK VALVE
PVS.U.3... CETOP 3/NG6



Type of adjustment

- M Plastic knob
- C Grub screw

Fixing screws UNI 5931 M5x50
with material specifications min. 8.8
Tightening torque 5 Nm / 0.5 Kgm

Support plane
specifications

