

QFU... IN LINE MOUNTING

ONE-WAY FLOW CONTROL VALVES



QFU...

One-way adjustable flow regulating type QFU.. allow free flow in one direction by means of a check valve while controlling it in the opposite direction. Their operation depends on the fluid pressure and viscosity. Flow regulation is obtained by turning a knurled knob, which permits control of the flow rate via a graduated scale from which it can be read. The special needle configuration allows an easy and precise control.

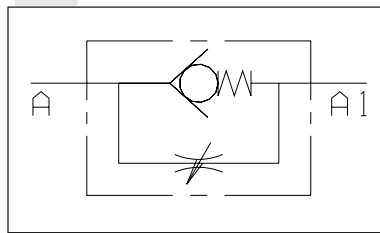
The body of these valves is zincked yellow steel made, while the internal components are manufactured in heat-treated steel. Their particular construction permits both panel and in-line mounting.

Max. operating pressure	300 bar
Standard opening pressure	0,5 bar
Max. flow	85 l/min
Hydraulic fluid	Mineral oils DIN 51524
Fluid viscosity	2.8 ÷ 380 mm ² /s
Fluid temperature	-20°C ÷ 70°C
Max. contamination level	class 10 in accordance with NAS 1638 with filter β ₂₅ ≥ 75
Weight	See table below

ORDERING CODE

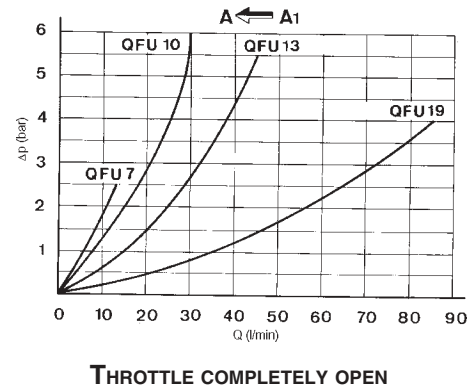
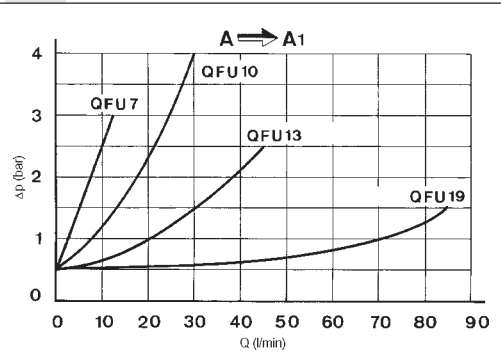
- QFU** One-way flow control valve
- **** Size
07
10
13
19
- 1** Opening pressure
0.5 bar (standard)
- G** Fixing ring nut
(omit if not required)
- 00** No variant
- 1** Serial No.

HYDRAULIC SYMBOL



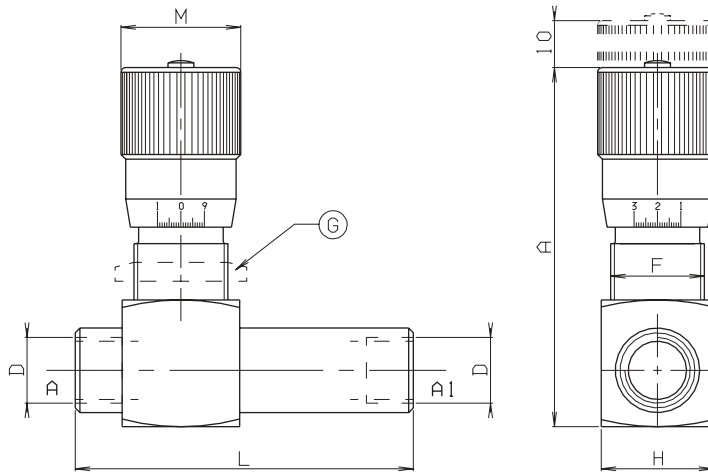
Test carried out with mineral based oil with a viscosity of 24 mm²/s at 50°C

PRESSURE DROPS - FLOW



OVERALL DIMENSIONS

G = Fixing ring nut on request



Valve type	Max flow (l/min)	Max. pressure (bar)	L	A	D	M	H	F	Weight (Kg)
QFU07	12	300	72	80	1/4"BSP	25	25	M20x1	0.25
QFU10	30	300	78	85	3/8"BSP	32	30	M25x1.5	0.42
QFU13	45	280	92	92	1/2"BSP	35	35	M30x1.5	0.60
QFU19	85	250	106	105	3/4"BSP	40	45	M35x1.5	1.10

6