

VD.40... DECELERATION VALVES

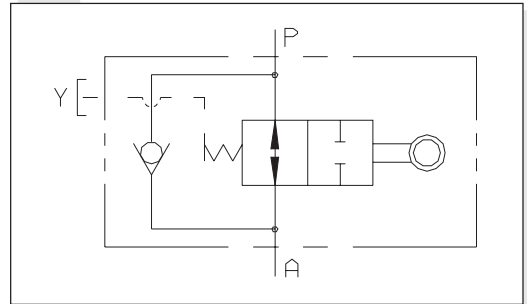


VD.40...

These valves are used as cam controlled unidirectional flow regulators. Normally mounted in line between actuator and directional valve for the displacement of carriages or slides, they enable cam controlled acceleration or deceleration of the moving mass.
A special internal check valve allows free flow the opposite direction.

Max. operating pressure	180 bar
Max. flow	40 l/min
Leakages	0,06 l/min
Cam travel	See diagram
Hydraulic fluids	Mineral oils DIN 51524
Fluid viscosity	10 ÷ 500 mm ² /s
Fluid temperature	-25°C ÷ 75°C
Ambient temperature	-25°C ÷ 60°C
Max. contamination level	class 10 in accordance with NAS 1638 with filter $\beta_{25} \geq 75$
Weight	2,8 Kg

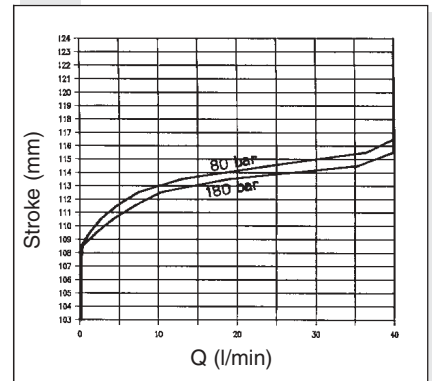
HYDRAULIC SYMBOL



ORDERING CODE

VD	Deceleration valve
40	Flow rate 40 l/min
A	1/2" BSP ports thread
**	00 = No variant V1 = Viton FA = Not complete closing to avoid the "jump" in the controlled actuator
3	Serial No.

FLOW RATE / STROKE



OVERALL DIMENSIONS

