

VR... IN LINE MOUNTING ONE-WAY CHECK VALVES



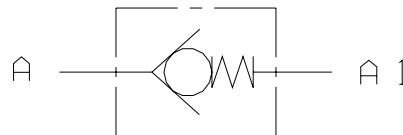
Single-acting check valves type VR... allow free fluid flow in one direction while blocking in the opposite direction, ensuring at the same time no blow-by thanks to a guided conical shutter.

The body of these valves is zincked yellow steel made, while their conical shutter is manufactured in heat-treated steel.

Max. operating pressure	350 bar
Standard opening pressure	0,5 bar
Max. flow	310 l/min
Hydraulic fluid	Mineral oils DIN 51524
Fluid viscosity	2.8 ÷ 380 mm ² /s
Fluid temperature	-20°C ÷ 80°C
Max. contamination level	class 10 in accordance with NAS 1638 with filter β ₂₅ ≥ 75
Weight	See table below

VR...

HYDRAULIC SYMBOL

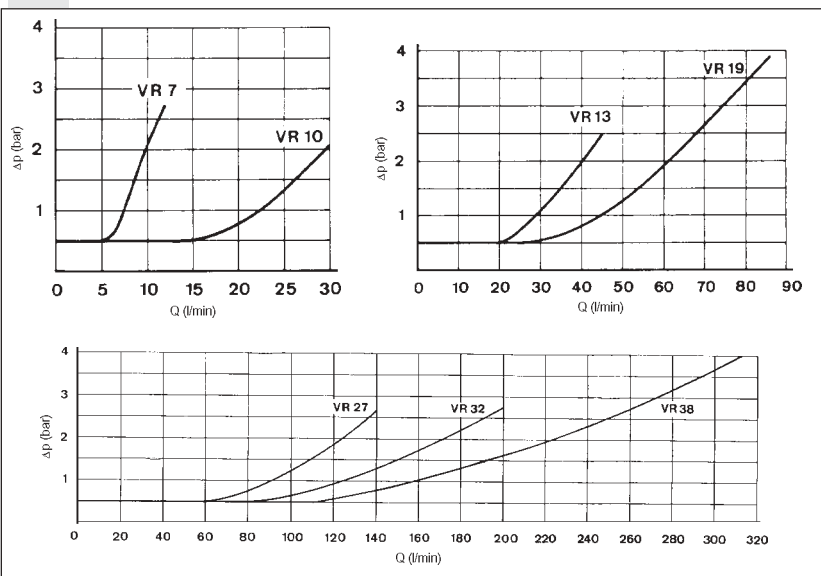


ORDERING CODE

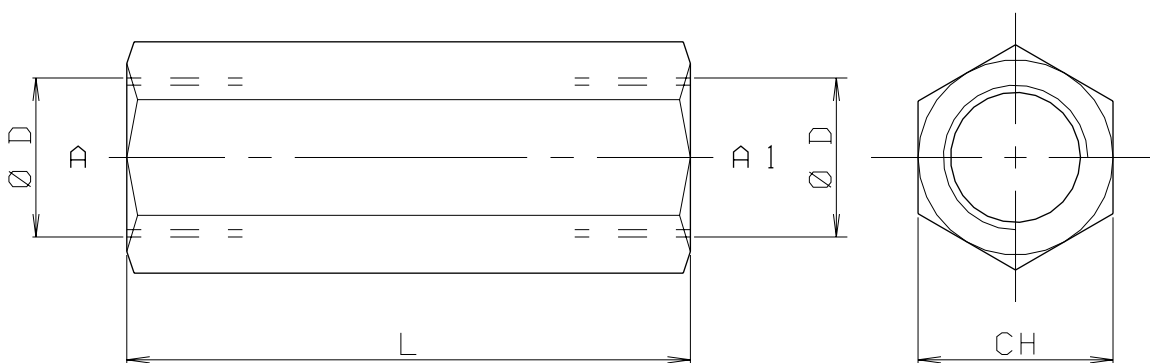
- VR** Check valve
- **** Size
 - 07
 - 10
 - 13
 - 19
 - 27
 - 32
 - 38
- *** Opening pressure
 - 1 = 0.5 bar (standard)
 - 3 = 5 bar
 - 4 = 10 bar
- 00** No variant
- 1** Serial No.

Test carried out with mineral based oil with a viscosity of 24 mm²/s at 50°C

PRESSURE DROPS - FLOW



OVERALL DIMENSIONS



Valve type	Max flow (l/min)	Pressure max. (bar)	L	CH	D	Weight (Kg)
VR07	12	350	62	19	1/4"BSP	0.10
VR10	30	350	68	24	3/8"BSP	0.17
VR13	45	350	78	27	1/2"BSP	0.22
VR19	85	300	88	36	3/4"BSP	0.45
VR27	140	250	112	46	1"BSP	0.97
VR32	200	250	142	55	1 1/4 BSP	1.68
VR38	310	210	155	60	1 1/2 BSP	2.10