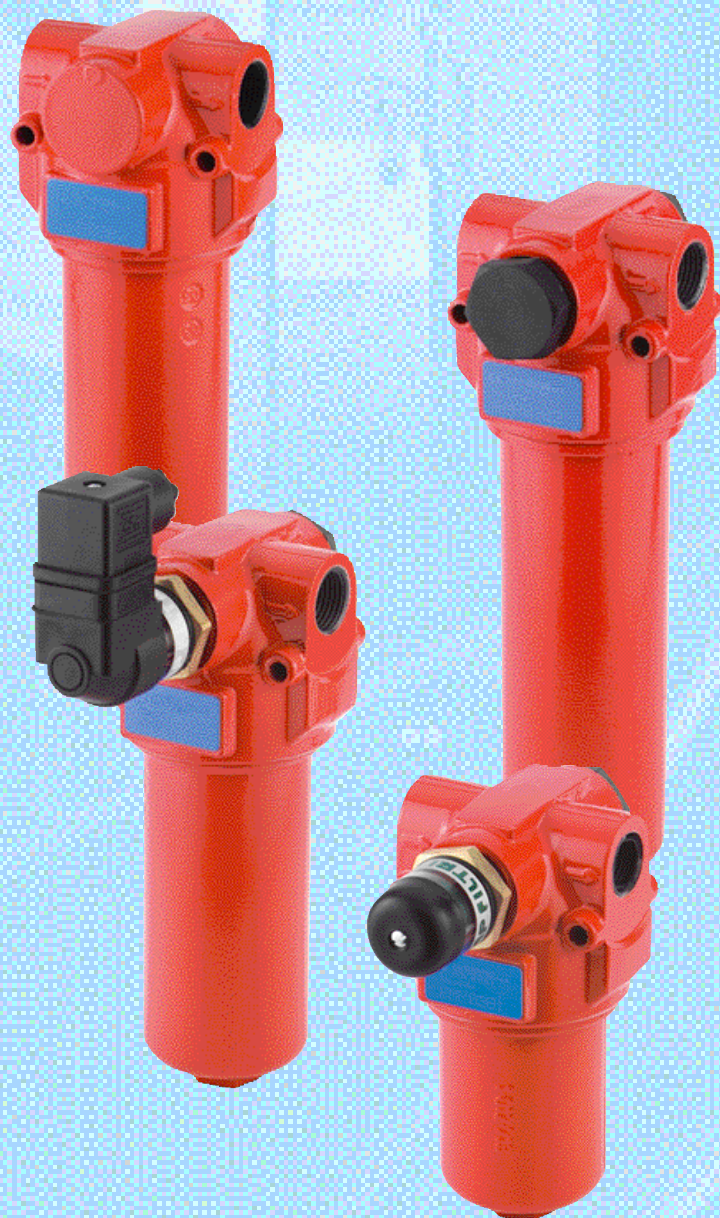
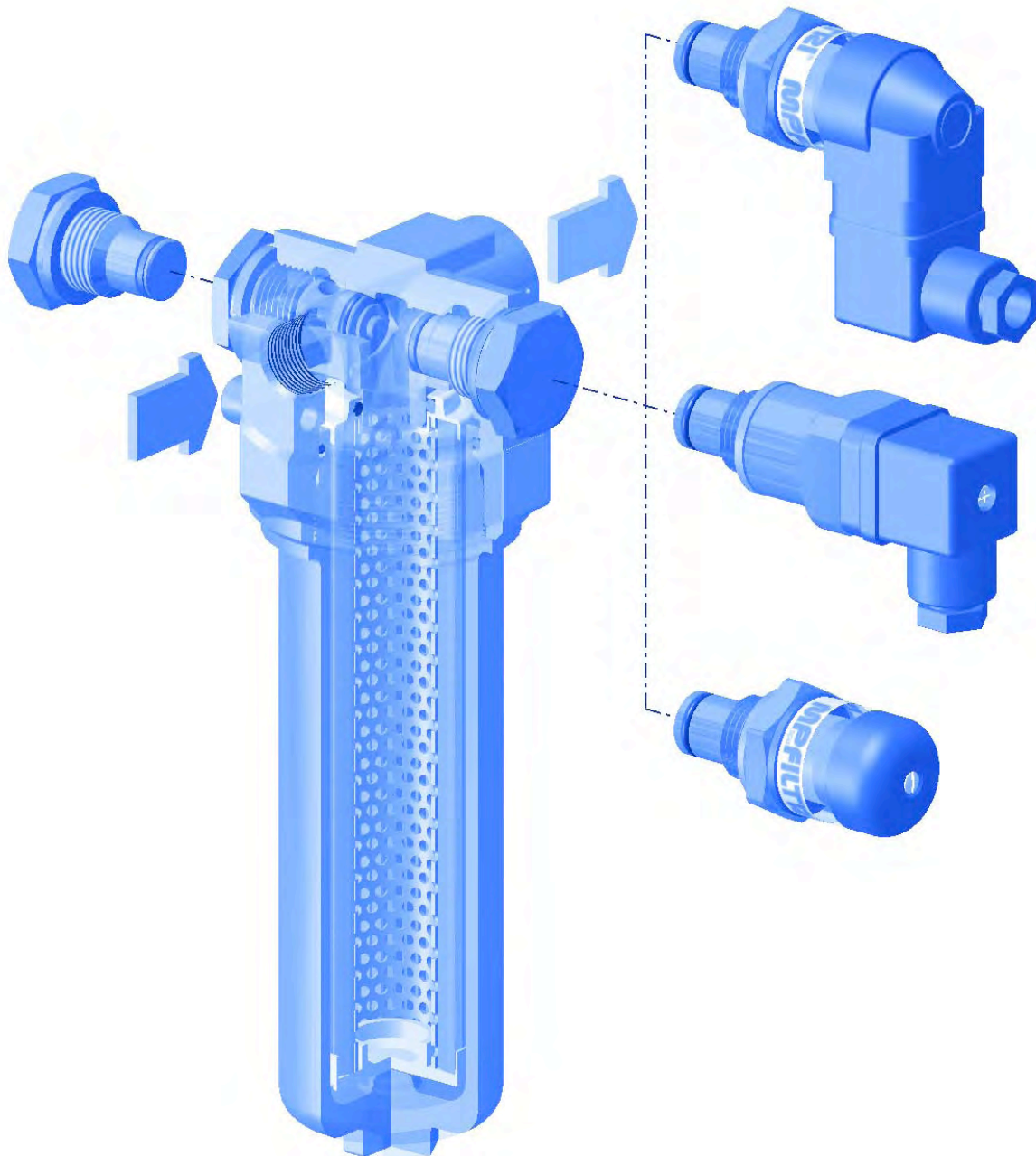


FMP 038



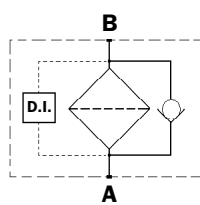
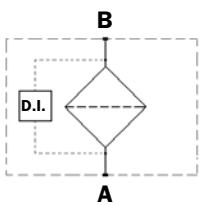
SERIES FMP038

Working pressure
110 bar



Style S

Style B



Technical data

Filter body (Materials)

- Head: Anodized Aluminum
- Housing: Anodized Aluminum
- Bypass valve: Brass

Pressure

- Working pressure: 110 bar (11 MPa)
- Test pressure: 160 bar (16 MPa)
- Burst pressure: 330 bar (33 MPa)
- Pulsed pressure fatigue test: 1,000,000 of cycles with variable pressure from 0 to 110 bar (11 MPa)

Temperature

- From -25°C to +110°C

Bypass valve

- Opening pressure 6 bar $\pm 10\%$
- Other opening pressures on request.

Elements type Δp

- Micro fibre filter elements series N: 20 bar
- Stainless steel mesh elements series N: 20 bar
- Oil flow from exterior to interior.

Seals

- Standard Nitrile (NBR) series A
- Optional FPM series V

Weights without filter elements (kg.)

Length

- FMP038 -1 0.8
- FMP038 -2 1.3
- FMP038 -5 1.1

Filter internal volumes (dm³)

Length

- FMP038 -1 0.28
- FMP038 -2 0.43
- FMP038 -5 0.35

Connections

In-line Inlet/Outlet

Compatibility

- Bodies compatible with:
 - Mineral oils to ISO 2943 - aqueous emulsions
 - Synthetic fluids, water/glycol.
- Filter elements compatible with:
 - Mineral oils to ISO 2943 - aqueous emulsions
 - Synthetic fluids, water/glycol.
- Nitrile (NBR) seals series A, compatible with:
 - Mineral oils to ISO 2943 - aqueous emulsions
 - Synthetic fluids, water/glycol.
- V series FPM seals, compatible with:
 - Synthetic fluids type HS-HFDR-HFDS-HFDU

Filter Element Area

Filter element in stainless steel mesh
Length

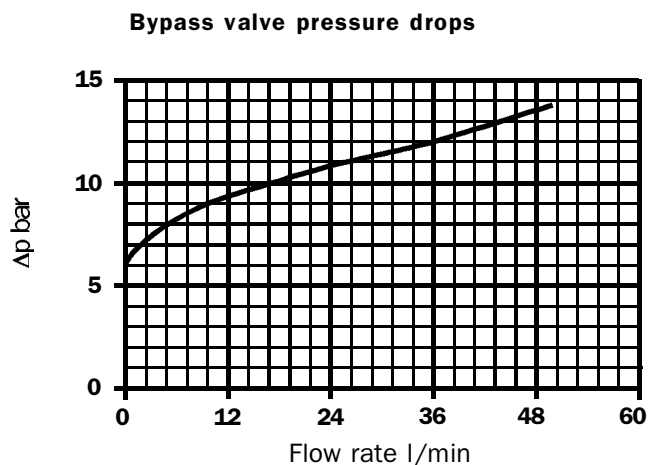
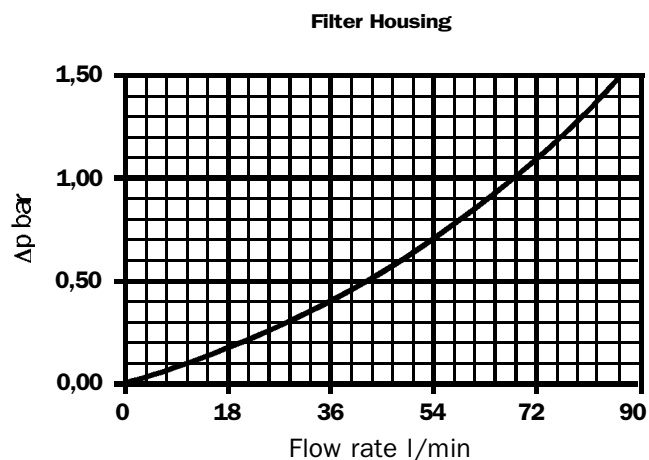
Type	1	5	2
HP037	350	570	700

Values expressed in cm²

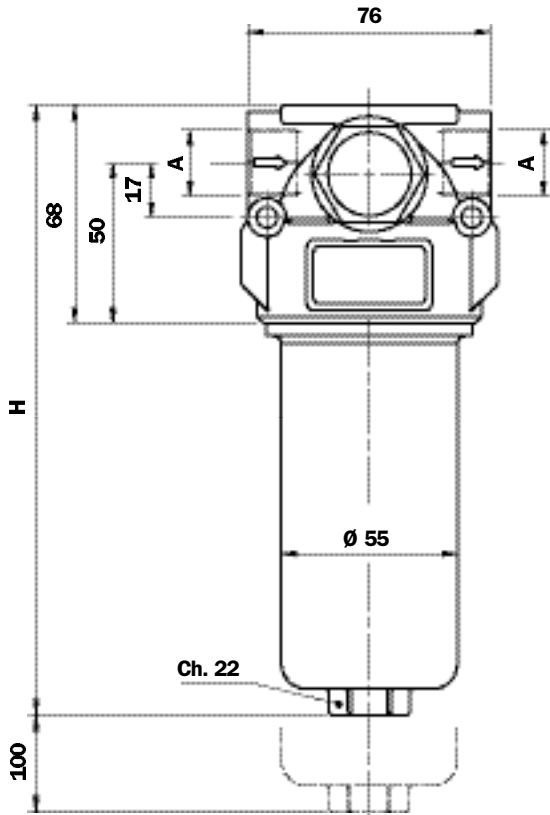
Pressure drops Δp Housing

The curves are plotted using mineral oil with density of 0.86 kg/dm³ to ISO 3968.

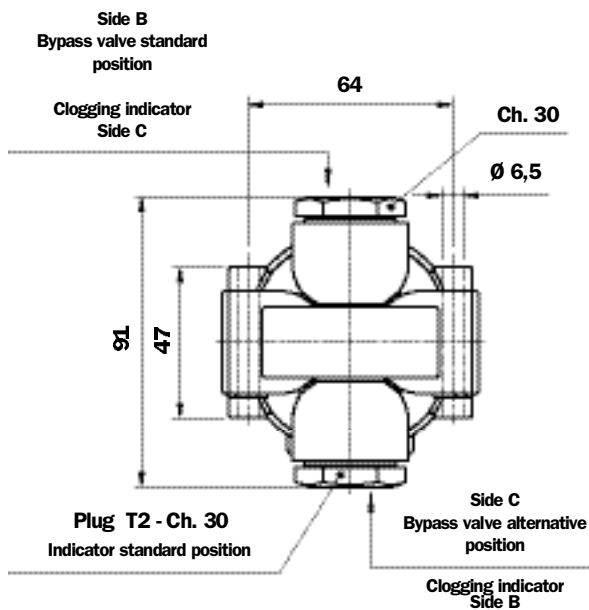
Δp varies proportional with density.



FMP 038



Indicator and bypass valve positions can be interchanged.



Recommended maximum flow rate

- Pressure drop of complete filter equal to Δp 1.5 bar.
- Oil kinematic viscosity 30 mm²/s (cSt).
- Density 0.86 kg/dm³.
- Connections of filter under test G 1/2".

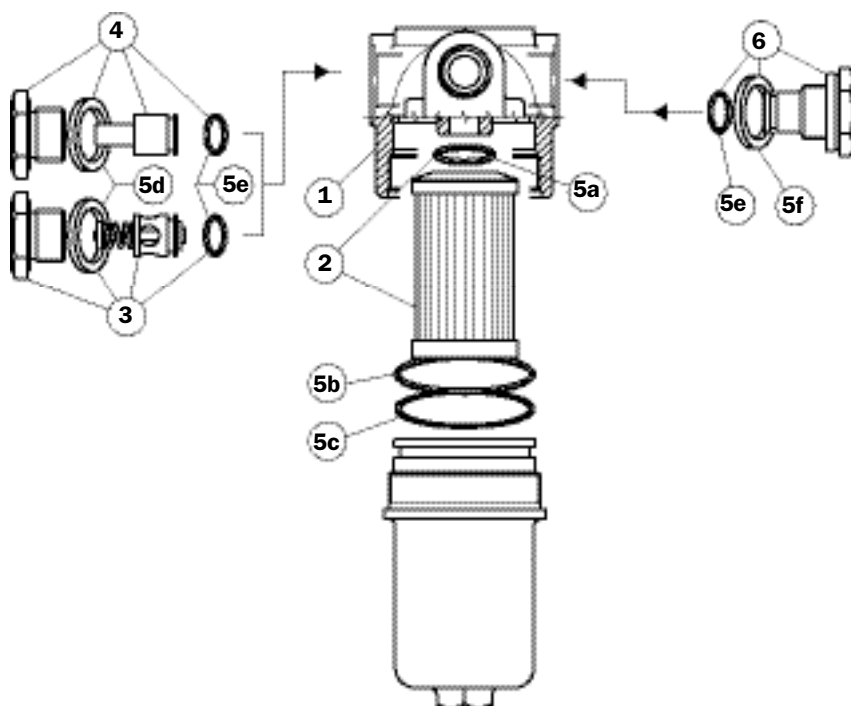
Filter element type	Flow rate l/min Series N	Filter Length
A03	20	1
A06	25	
A10	45	
A16	46	
A25	54	
M25	72	
A03	32	5
A06	35	
A10	50	
A16	58	
A25	66	
M25	86	
A03	40	2
A06	43	
A10	58	
A16	62	
A25	71	
M25	90	

A Threaded Connections

G 1/2"
1/2" NPT
SAE 8 - 3/4" - 16 UNF

Filter Length	H mm
1	150
5	193
2	237

Spare parts FMP038



Pos.	Description	Qty.	Series FMP 038 FILTER 038 1 - 5 - 2	
1	Complete filter	1	See order table	
2	Filter Element	1	See order table	
3	Bypass Assembly	1	02001312 (NBR) 02001385 (FPM)	
4	No Bypass Assembly	1	02001314 (NBR) 02001386 (FPM)	
5	Seal kits	1	NBR 02050310	FPM 02050311
5a	Filter element O-Ring	1	OR 4087 Ø 21.82 x 3.53	
5b	O-Ring for housing	1	OR 3200 Ø 50.47 x 2.62	
5c	Anti-extrusion ring	1	Parbak 136 Ø 51.26 x 2.18	
5d	Bonded seal	1	G 1/2"	
5e	O-Ring	2	OR 2050 Ø 12.42 x 1.78	
5f	Gasket	1	01030058 (HNBR)	01030046 (FPM)
6	Indicator plug	1	T2H	T2V
-	Indicator	1	See order table	

Ordering information FMP038

Filter assembly FMP 038

Example: FMP038

1	2	3	4	5	6	7_a
<input type="checkbox"/>	<input type="checkbox"/>	<input type="checkbox"/>	<input type="checkbox"/>	<input type="checkbox"/>	<input type="checkbox"/>	<input type="checkbox"/>
2	B	A	G1	A10	N	P01

Filter element HP 037

Example: HP037

1	5	3	6	7_b
<input type="checkbox"/>	<input type="checkbox"/>	<input type="checkbox"/>	<input type="checkbox"/>	<input type="checkbox"/>
2	A10	A	N	P01

1 - Filter length

1
5
2

2 - Bypass valve

B	With bypass side B
C	With bypass side C
D	Without bypass with plug T2 side B
E	Without bypass with plug T2 side C
F	Without connection to bypass valve

3 - Seals

A	NBR
V	FPM

4 - Connections

G1	G 1/2"
G2	1/2" NPT
G3	SAE 8 (3/4" - 16 UNF)

5 - Filter element

A03	3 μ Inorganic microfibre	} 8x (c) ≥ 1000 see page 10
A06	6 μ Inorganic microfibre	
A10	10 μ Inorganic microfibre	
A16	16 μ Inorganic microfibre	
A25	25 μ Inorganic microfibre	
M25	Stainless steel mesh 25 m (in N style only)	

6 - Filter elements differential pressure

N	20 bar
----------	--------

7 - Options

a) Filter

P01	T h ræded connection for indicator (without plug T2)
P02	T h ræded connection for indicator (with plug T2)
P03	Filters without connection for indicator
Pxx	Customer request

b) Filter element

P01	MP Filtri standard
Pxx	Customer request

DIFFERENTIAL INDICATORS (see page 15)

MP Filtri - The filter functions as described in this bulletin are valid exclusively for original MP Filtri filter elements and replacement parts. All rights reserved

The data in this publication is marketing information. MP Filtri reserves the right to make changes to the product described herein at any time it deems fit in relation to technical or commercial requirements. The colors of the products shown on the cover are for illustration purposes only.
Copyright. All rights reserved.