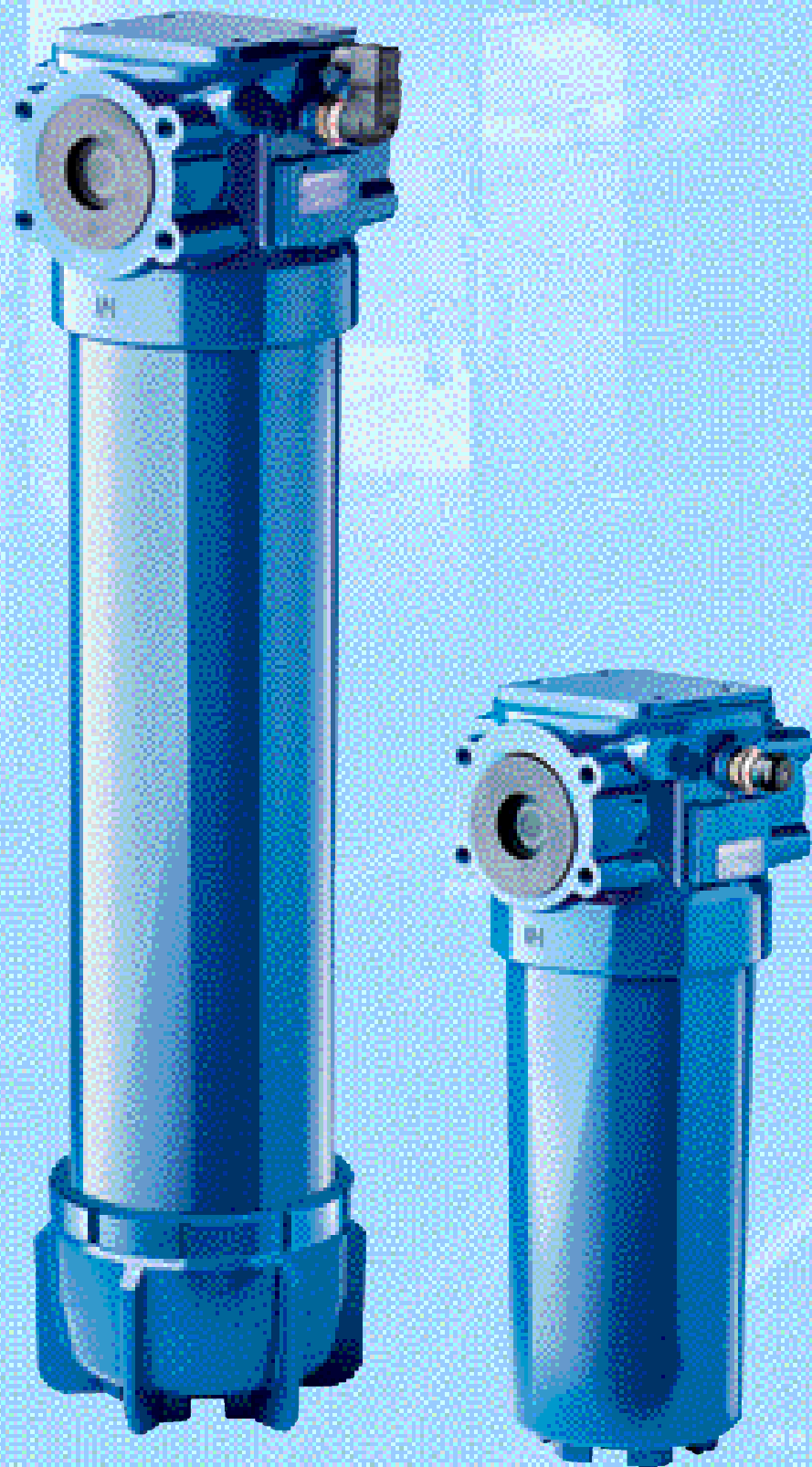


LMP 900-901



LMP

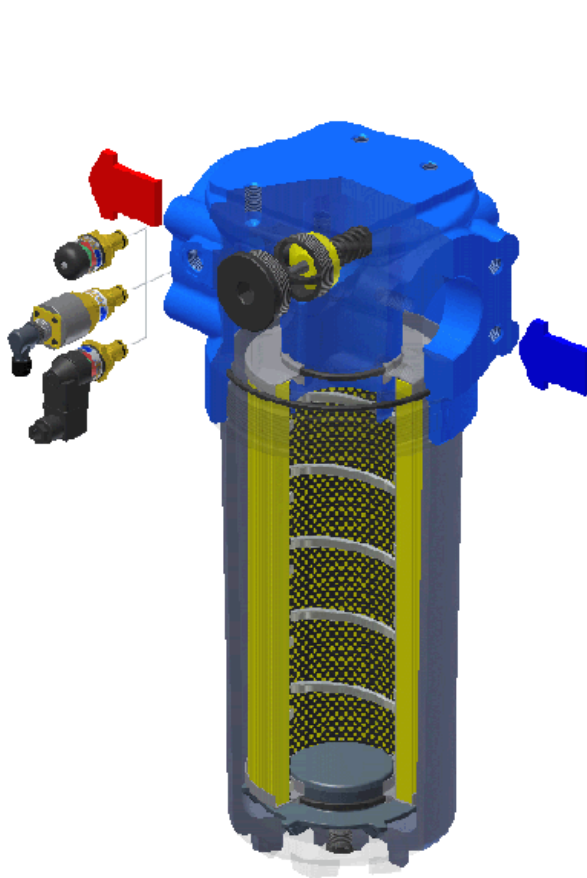
SERIES

900 - 901

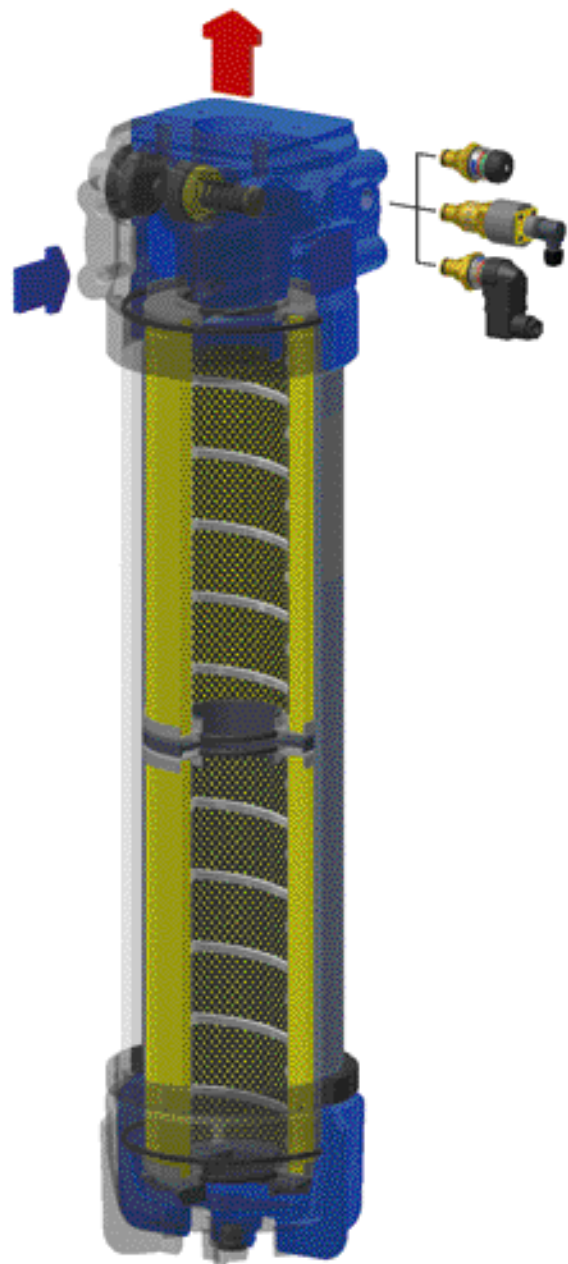
Working pressure

30 bar

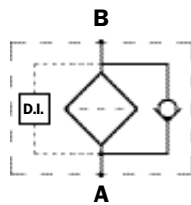
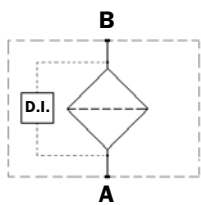
***Filter elements in compliance with
DIN 24550 standards***



Style **S**



Style **B**



Technical data

Filter housing (Materials)

- Head: Anodised Aluminium
- Housing: Anodised Aluminium
- Bypass valve: Steel

Pressure

- Working pressure: 30 bar (3 MPa)
- Test pressure: 45 bar (4.5 MPa)
- Burst pressure: 120 bar (12 MPa)
- Pulsed pressure fatigue test: 1.000.000 cycles with pressure from 0 to 30 bar (3 MPa)

Temperature

- From -25°C to +110°C

Bypass valve

- Opening pressure 3.5 bar \pm 10%
- Other opening pressures on request.

Number of filter elements

- LMP 900-1: 1 filter element CU900
- LMP 900-2: 2 filter elements CU900

Filter elements

- Filter element in compliance with DIN 24550 standard
Size: 1000

Elements type Δp

- Series N and W elements: 20 bar
- Oil flow from exterior to interior.

Seals

- Standard NBR series A
- Optional FPM series V

Weights (kg)

Length

- LMP900 -1 19.2
- LMP900 -2 30.4

Volumes (dm³)

Length

- LMP900 -1 16
- LMP900 -2 24

Connections

In-line Inlet/Outlet LMP 900
90° Inlet/Outlet LMP 901

Compatibility

- Housings compatible with:
Mineral oils to ISO 2943 - aqueous emulsions
synthetic fluids, water and glycol.

- The filter elements are compatible with:
Mineral oils to ISO 2943, Synthetic fluids
Aqueous emulsions, water and glycol (series W required).
- NBR seals series A, compatible with:
Mineral oils to ISO 2943 - aqueous emulsions
synthetic fluids, water and glycol.
- V series FPM seals, compatible with:
Synthetic fluids type HS-HFDR-HFDS-HFDU
To ISO 2943

Filter Element Area

Filter element in stainless steel mesh
Length

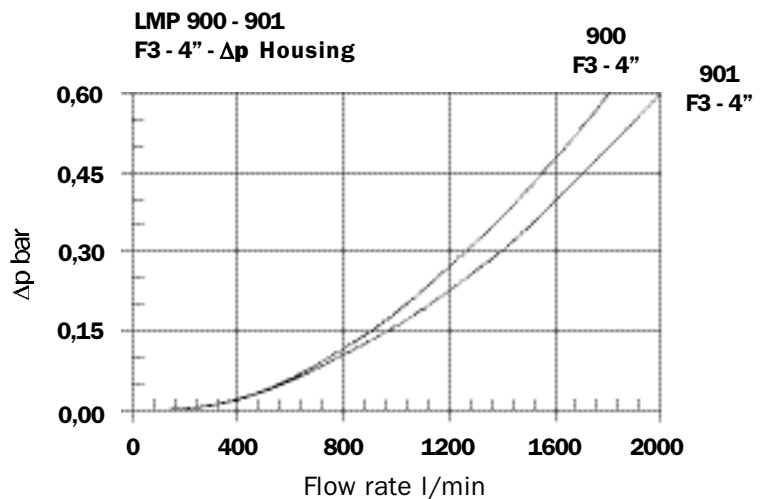
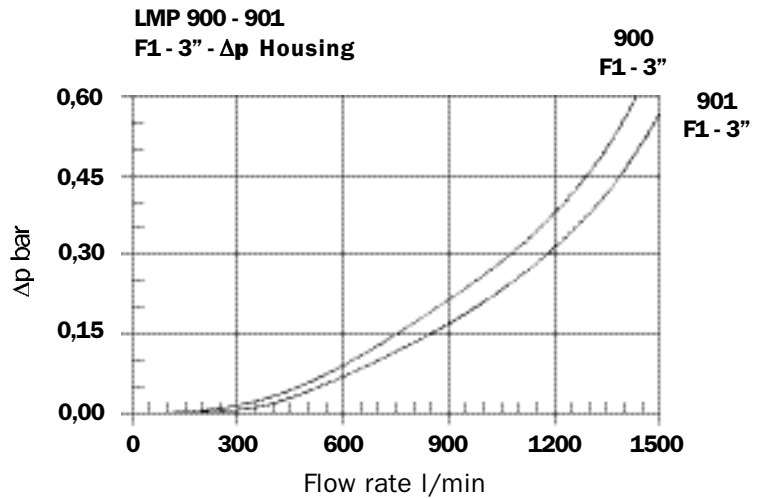
Type	1	2
CU 900	13000	26000

Values expressed in cm²

Filter housing Δp pressure drop

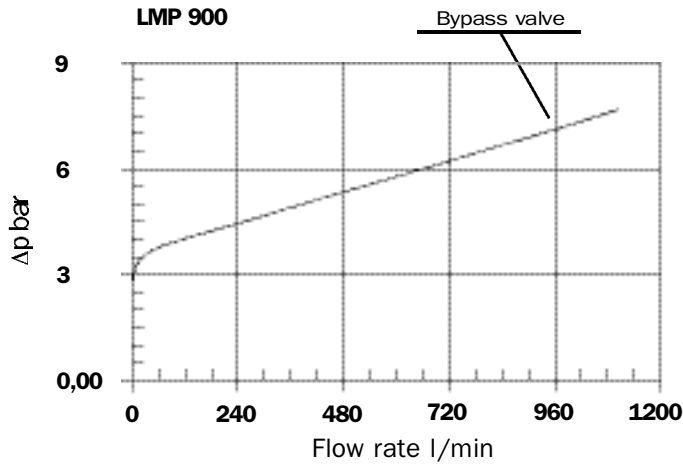
The curves are plotted utilising mineral oil with density of 0.86 kg/dm³ to ISO 3968.

Δp varies proportionally with density.



Valves

Bypass valve pressure drop



Recommended maximum flow rate

Recommended maximum flow rate for filters installed on lubrication lines, return or in-line filters is defined by the maximum oil velocity in the connections.

For filters mounted on Off-Line lines the maximum recommended flow rate is defined by the pressure drop of the filter element.

Filter for pressurised lubrication, max. oil velocity 2.5 m/sec.

Return or in-line filter, max oil velocity 5 m/sec.

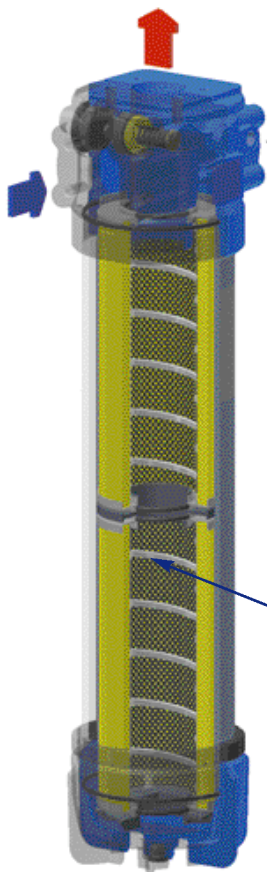
Oil velocity	Connections	
	3"	4"
2,5 m/sec.	750	1200
5 m/sec.	1500	2400

Flow rate l/min

Off-Line filter, filter element recommended maximum pressure drop must be equal to $\Delta p \ 0.2 \div 0.3$ bar.

LMP 900

Length 2



LMP 900 - 901 filters are equipped with two 1000 size cartridges in compliance with DIN 24550 standard, connected by means of a removable coupling spigot.

Coupling spigot

Recommended maximum flow rate

- Pressure drop of filter assembly equal to $\Delta p \ 0.6$ bar.

- Oil kinematic viscosity $30 \text{ mm}^2/\text{s}$ (cSt).

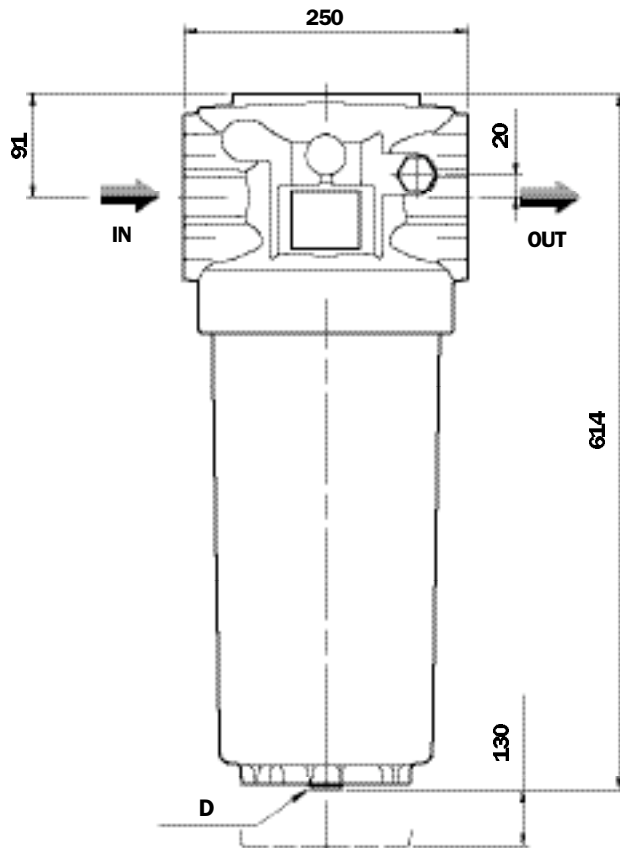
- Density $0.86 \text{ kg}/\text{dm}^3$.

Filter element type	Flow rate l/min Series N	Filter length	Connections
A03	600	1	Flange SAE 3000 3"
A06	750		
A10	1100		
A16	1150		
A25	1250		
M25	1500		
A03	950	2	
A06	1100		
A10	1300		
A16	1350		
A25	1400		
M25	1500		
A03	650	1	Flange SAE 3000 4"
A06	800		
A10	1200		
A16	1250		
A25	1400		
M25	1900		
A03	1000	2	
A06	1200		
A10	1550		
A16	1550		
A25	1650		
M25	2000		

Dimensions

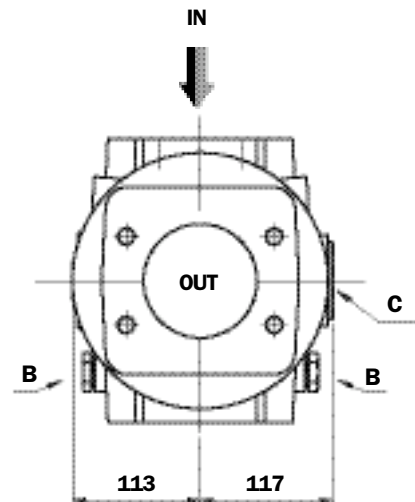
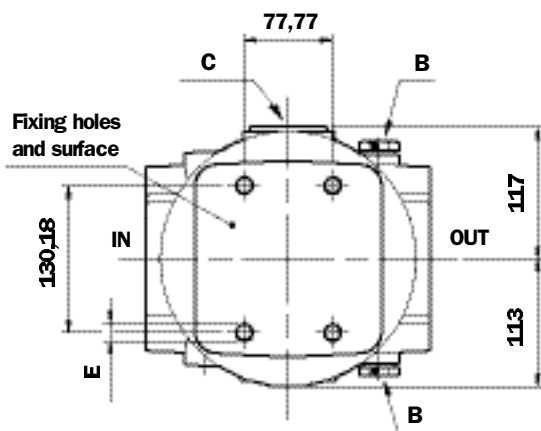
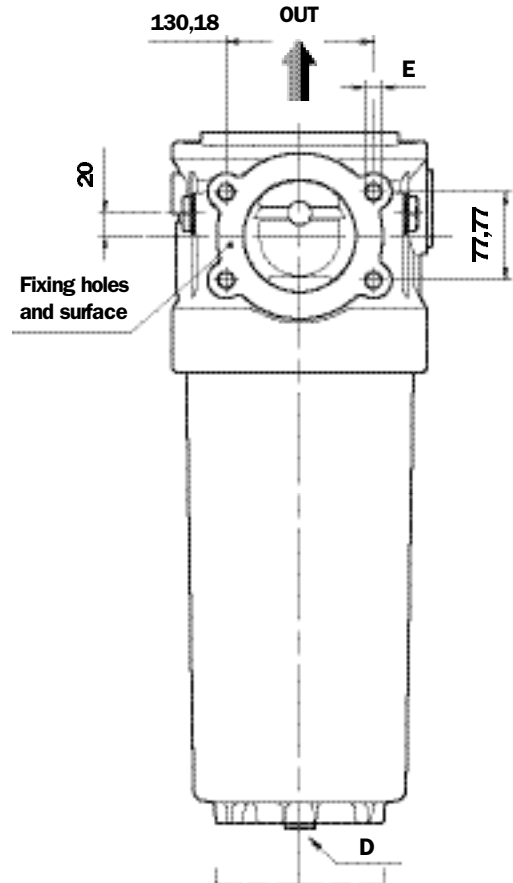
LMP 900

Length 1



LMP 901

Length 1



Flanged IN/OUT connections

E
Depth 25 mm

3" SAE 3000 psi/M	M16
4" SAE 3000 psi/M	M16
3" SAE 3000 psi/UNC	5/8" UNC
4" SAE 3000 psi/UNC	5/8" UNC

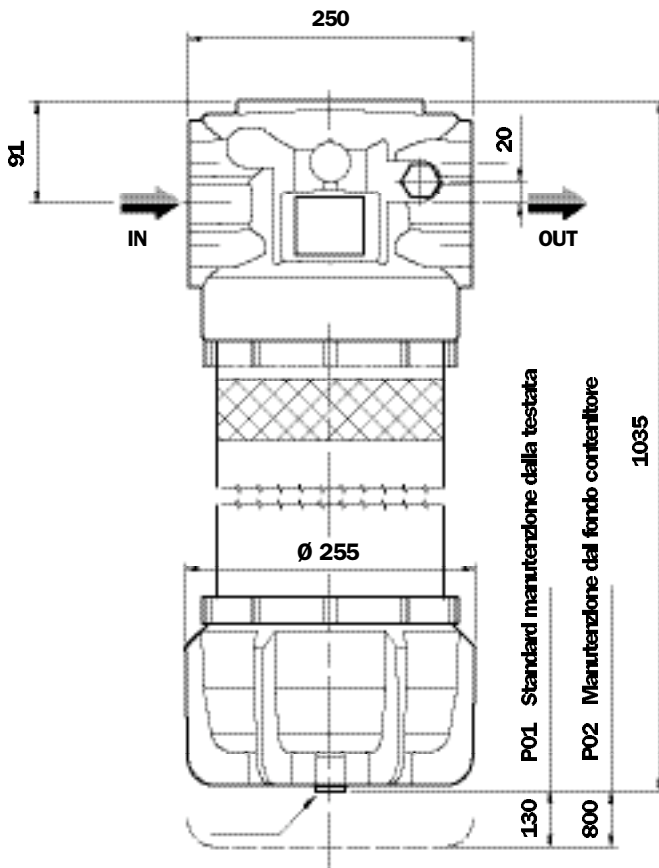
B Indicator connection - Plug T2 - Ch. 30

C Bypass valve - Ch. 17

D Oil drain plug - G 1/2" - Ch. 10

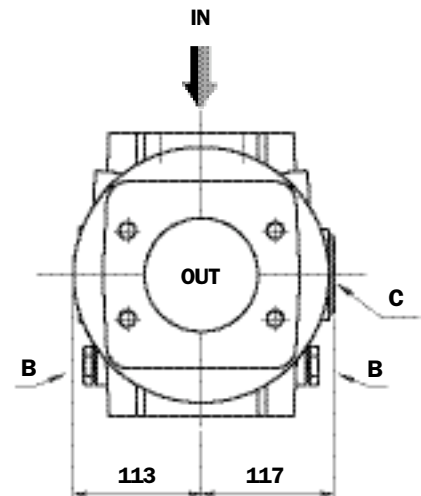
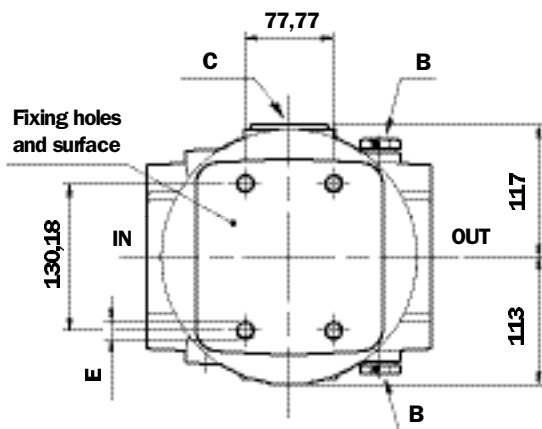
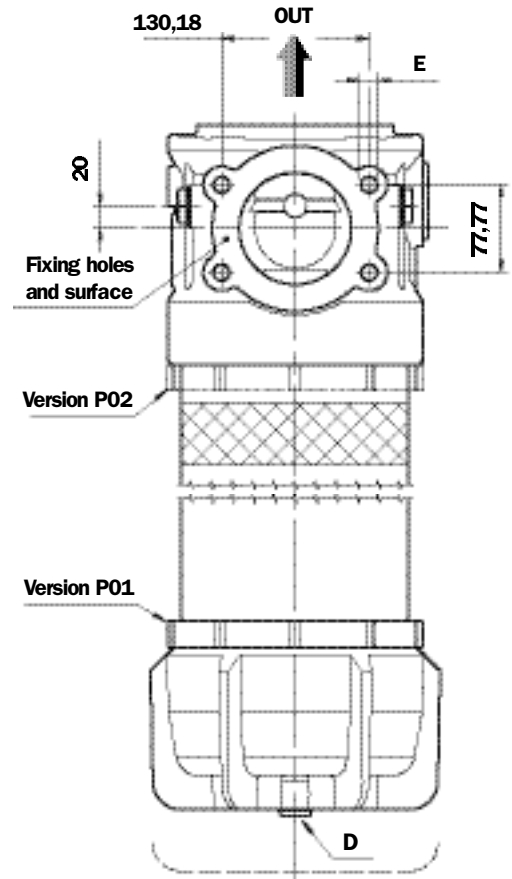
LMP 900

Length 2



LMP 901

Length 2



Flanged IN/OUT connections

E
Depth 25 mm

3" SAE 3000 psi/M	M16
4" SAE 3000 psi/M	M16
3" SAE 3000 psi/UNC	5/8" UNC
4" SAE 3000 psi/UNC	5/8" UNC

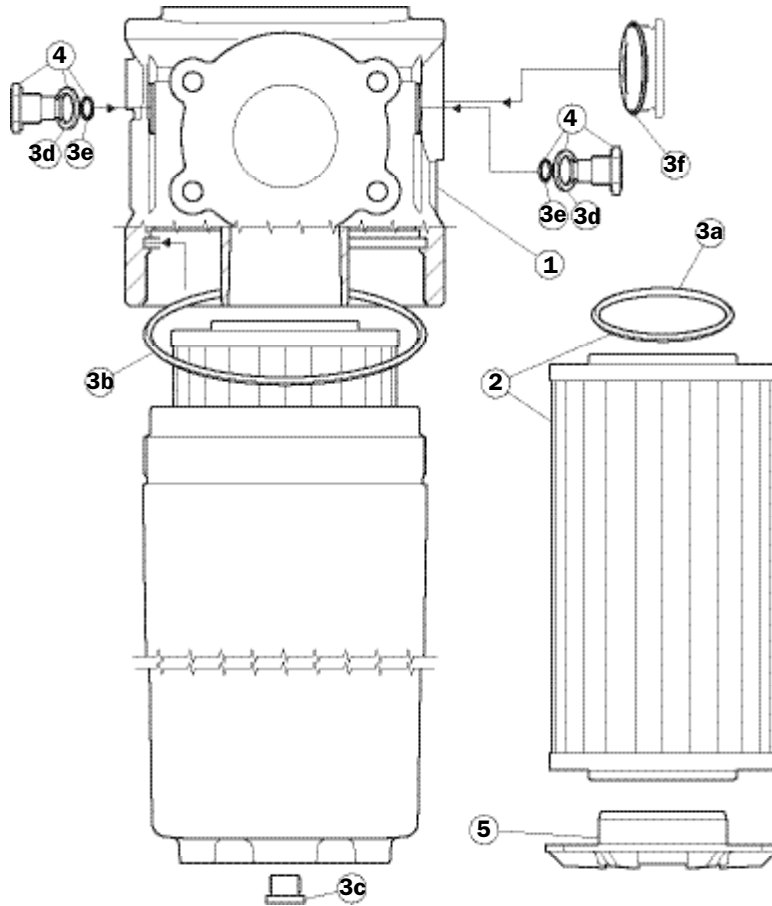
B Indicator connection - Plug T2 - Ch. 30

C Bypass valve - Ch. 17

D Oil drain plug - G 1/2" - Ch. 10

LMP900/901 spare parts

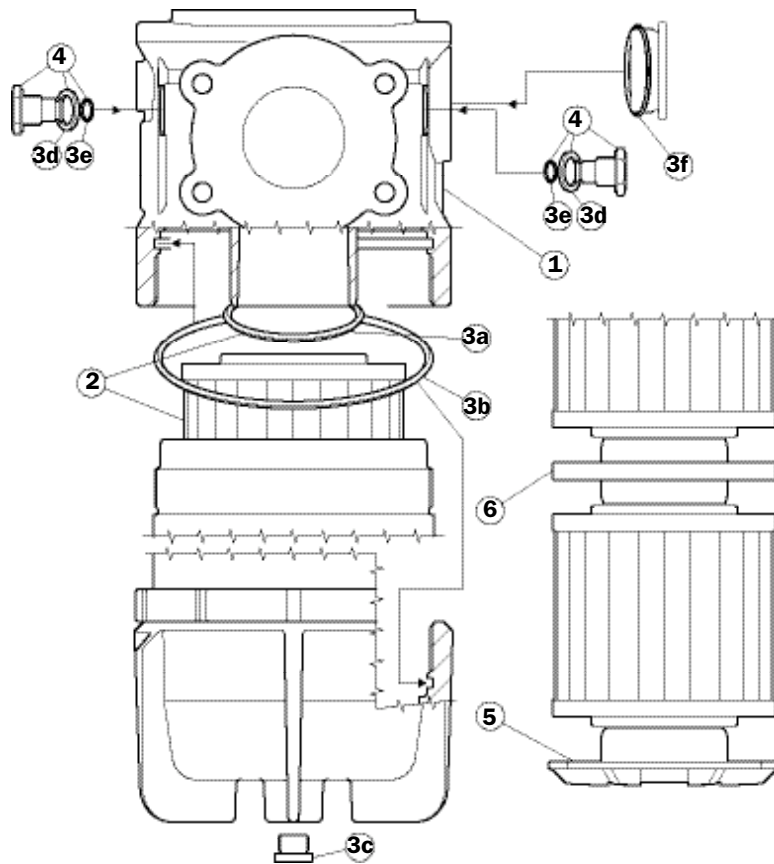
Length 1



Pos.	Description	Qty	FILTER Series LMP 900/901 - 1	
1	Filter assembly	1	See order table	
2	Filter Element	1	See order table	
3	Seals kit	1	NBR 02050363	FPM 02050364
3a	Filter element O-Ring	2	OR Ø 90 x 6 (NBR-50Sh)	
3b	O-Ring for housing	1	OR 6745 Ø 189,86 x 5,33	
3c	Oil drain plug	1	G 1/2" with seal	
3d	Bonded seal	2	01030058	01030046
3e	O-Ring	2	OR 2050 Ø 12,42 x 1,78	
3f	By-pass plug O-Ring	1	OR 3243 Ø 61,6 x 2,62	
4	Indicator connection plug	2	T2H	T2V
5	Housing spigot	1	01044104	
-	Indicator	1	See order table	

LMP 900/901 spare parts

Length 2



Pos.	Description	Qty	FILTER Series LMP 900/901 - 2	
1	Filter assembly	1	See order table	
2	Filter Element	2	See order table	
3	Seals kit	1	NBR 02050365	FPM 02050366
3a	Filter element O-Ring	4	O-R Ø 90 x 6 (NBR-50 Sh)	
3b	O-Ring for housing	2	O-R 6745 Ø 189,86 x 5,33	
3c	Oil drain plug	1	G 1/2" - with seal	
3d	Bonded seal	2	01030058	01030046
3e	O-Ring	2	O-R 2050 Ø 12,42 x 1,78	
3f	By-pass plug O-Ring	1	O-R 3243 Ø 61,6 x 2,62 - VITON	
4	Indicator connection plug	2	T2H	T2V
5	Housing spigot	1	01044104	
6	Coupling spigot	1	01044099	
-	Indicator	1	See order table	

LMP 900/901 ordering information

Filter assembly LMP

Example: LMP

1	2	3	4	5	6	7	8a
<input type="checkbox"/>	<input type="checkbox"/>	<input type="checkbox"/>	<input type="checkbox"/>	<input type="checkbox"/>	<input type="checkbox"/>	<input type="checkbox"/>	<input type="checkbox"/>
900	2	B	A	F1	A10	N	P01

Filter Element CU 900

Example: CU900

6	4	7	8b
<input type="checkbox"/>	<input type="checkbox"/>	<input type="checkbox"/>	<input type="checkbox"/>
A10	A	N	P01 (2 cartridges required)

1 - Filter sizes

900	LMP900 (in-line IN-OUT)
901	LMP900 (90° IN-OUT)

2 - Filter length

1	With 1 CU900 cartridge
2	With 2 CU900 cartridges

3 - Valves

S	Without by-pass
B	With by-pass

4 - Seals

A	NBR
V	FPM

5 - Connections

Type

F1	3" SAE 3000 PSI/M
F2	3" SAE 3000 PSI/UNC
F3	4" SAE 3000 PSI/M
F4	4" SAE 3000 PSI/UNC

6 - Filter element

A03	3 µm	A16	16 µm	Absolute filtration Inorganic microfibre βx (c) ≥ 1000 see page 9
A06	6 µm	A25	25 µm	
A10	10 µm			
M25	25 µm	M90	90 µm	Nominal Filtration Metal mesh see page 9
M60	60 µm			

7 - Filter elements series

N	Δp 20 bar
W	Δp 20 bar (aqueous emulsions - water and glycol)

8 - Options

a - Filters

P01	MP Standard filters
P02	Maintenance from base of housing (length 2 only)
Pxx	Customer reques

b - Filter elements

P01	MP Standard filters
Pxx	Customer reques

DIFFERENTIAL INDICATORS (see page 12)

MP Filtri - The filter functions as described in this bulletin are valid exclusively for original MP Filtri filter elements and replacement parts. All rights reserved

The data in this publication are purely guideline. MP Filtri reserves the right to make changes to the models described herein at any time it deems fit in relation to technical or commercial requirements. The colours of the products shown on the cover are purely guideline. Copyright. All rights reserved.