

LMP 950-951

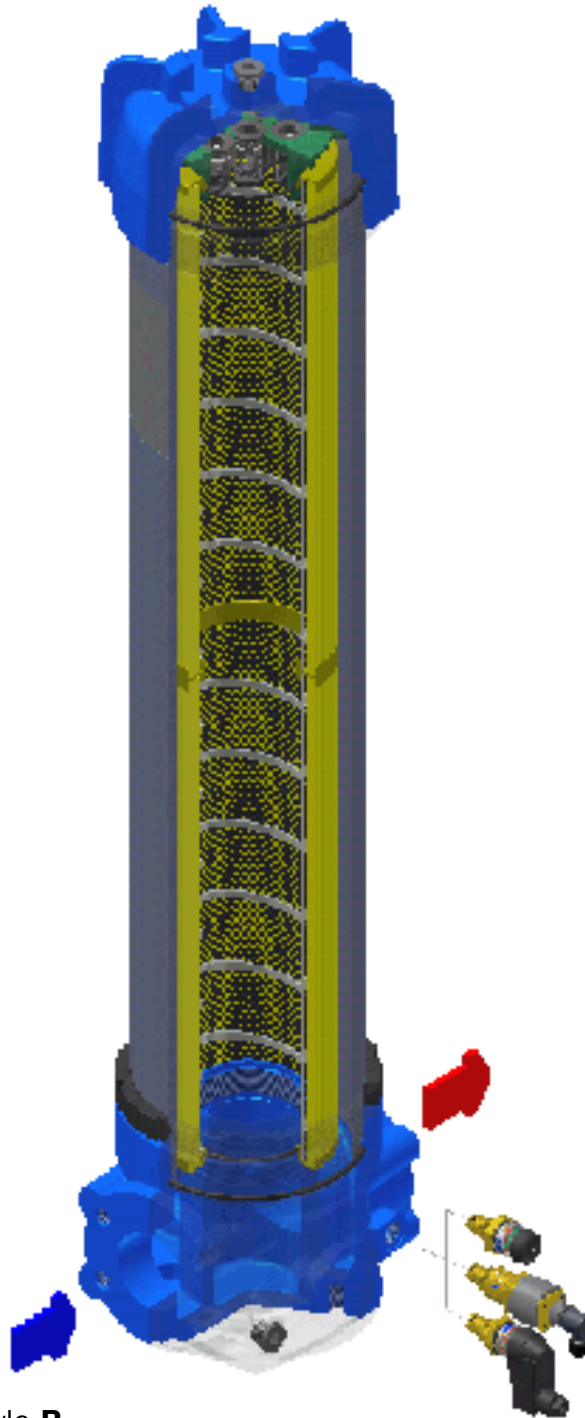


LMP

SERIES

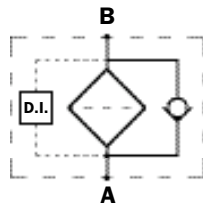
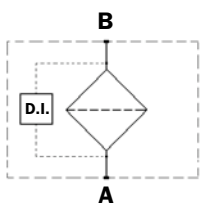
950-951

Working pressure
30 bar



Style S

Style B



Technical data

Filter housing (Materials)

- Head: Anodised Aluminium
- Housing: Anodised Aluminium
- Bypass valve: Anodised Aluminium

Pressure

- Working pressure: 30 bar (3 MPa)
- Test pressure: 45 bar (4.5 MPa)
- Burst pressure: 120 bar (12 MPa)
- Pulsed pressure fatigue test: 1.000.000 cycles with pressure from 0 to 30 bar (3 MPa)

Temperature

- From -25°C to +110°C

Bypass valve

- Opening pressure 3.5 bar \pm 10%
- Other opening pressures on request.

Δp filter elements

- Series N and W elements: 20 bar
- Oil flow from exterior to interior.

Seals

- Standard NBR series A
- Optional FPM series V

Weights (kg)

Length

- LMP950 -2 25.1
- LMP950 -3 33.5

Volumes (dm³)

Length

- LMP950 -2 15
- LMP950 -3 28

Connections

In-line Inlet/Outlet LMP 950
90° Inlet/Outlet LMP 951

Compatibility

- Housings compatible with:
Mineral oils to ISO 2943 - aqueous emulsions
synthetic fluids, water and glycol.

- The filter elements are compatible with:
Mineral oils to ISO 2943, Synthetic fluids
Aqueous emulsions, water and glycol ((series W required).
- NBR seals series A, compatible with:
Mineral oils to ISO 2943 - aqueous emulsions
synthetic fluids, water and glycol.
- V series FPM seals, compatible with:
Synthetic fluids type HS-HFDR-HFDS-HFDU
To ISO 2943

Filter Element Area

Filter element in stainless steel mesh
Length

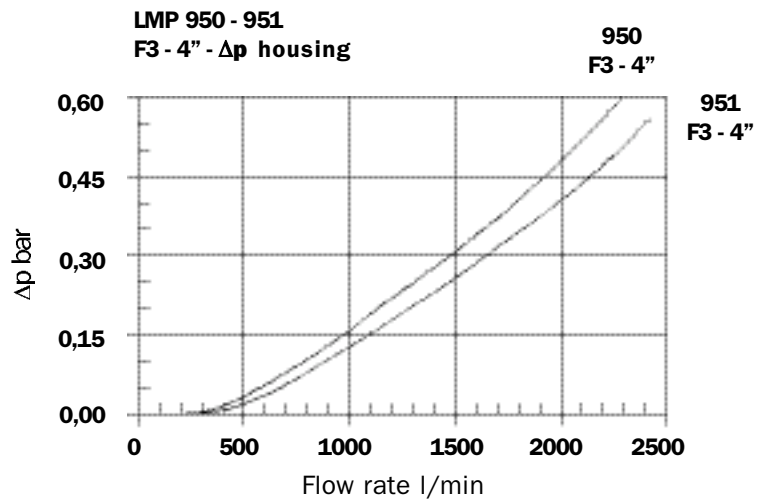
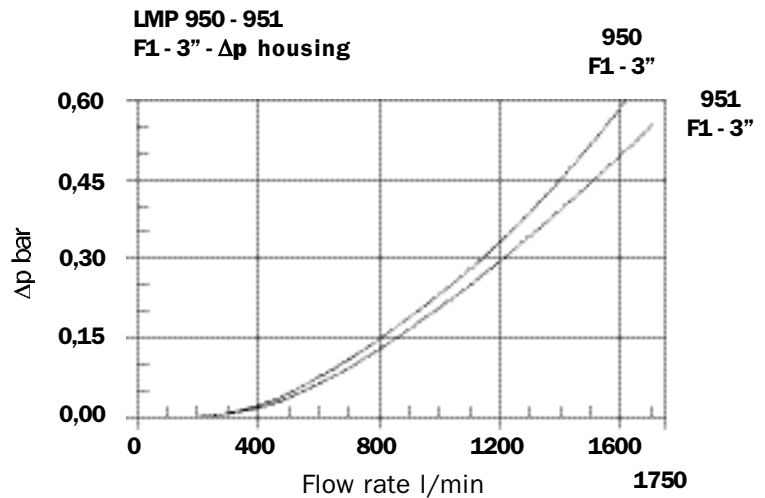
Type	2	3
CU 950	10950	25100

Values expressed in cm²

Filter housing Δp pressure drop

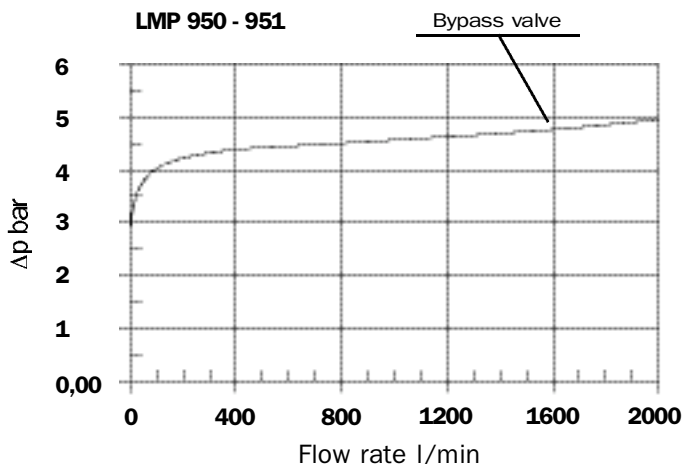
The curves are plotted utilising mineral oil with density of 0.86 kg/dm³ to ISO 3968.

Δp varies proportionally with density.



Valves

Bypass valve pressure drop

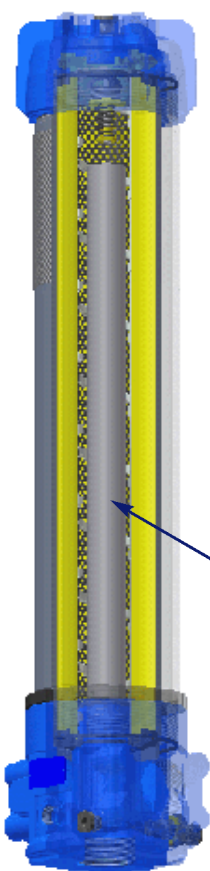


Recommended maximum flow rate

- Pressure drop of filter assembly equal to Δp 0.6 bar.
- Oil kinematic viscosity 30 mm²/s (cSt).
- Density 0.86 kg/dm³.

Filter element type	Flow rate l/min Series N	Filter length	Connections
A03	550	2	Flange SAE 3000 3"
A06	650		
A10	800		
A16	1000		
A25	1200		
M25	1700		
A03	950	3	
A06	1000		
A10	1200		
A16	1350		
A25	1400		
M25	1700		
A03	550	2	Flange SAE 3000 4"
A06	700		
A10	850		
A16	1100		
A25	1400		
M25	2300		
A03	1000	3	
A06	1100		
A10	1400		
A16	1600		
A25	1800		
M25	2400		

Option P02 for LMP 950/951



Option P02 "Internal tube for reduced flow rate" recommended for flow rate values below 100/150 l/min. The use of option P02 makes it easier to fill the housing with the operating fluid.

Recommended maximum flow rate

The recommended maximum flow rate for filters installed on lubrication lines, return or in-line filters is defined by the oil maximum velocity in the connections. Recommended maximum flow rate for Off-Line filters is defined by the filter element pressure drop.

Filter for pressurised lubrication, max. oil velocity 2.5 m/sec.
Return or in-line filter, max oil oil velocity 5 m/sec.

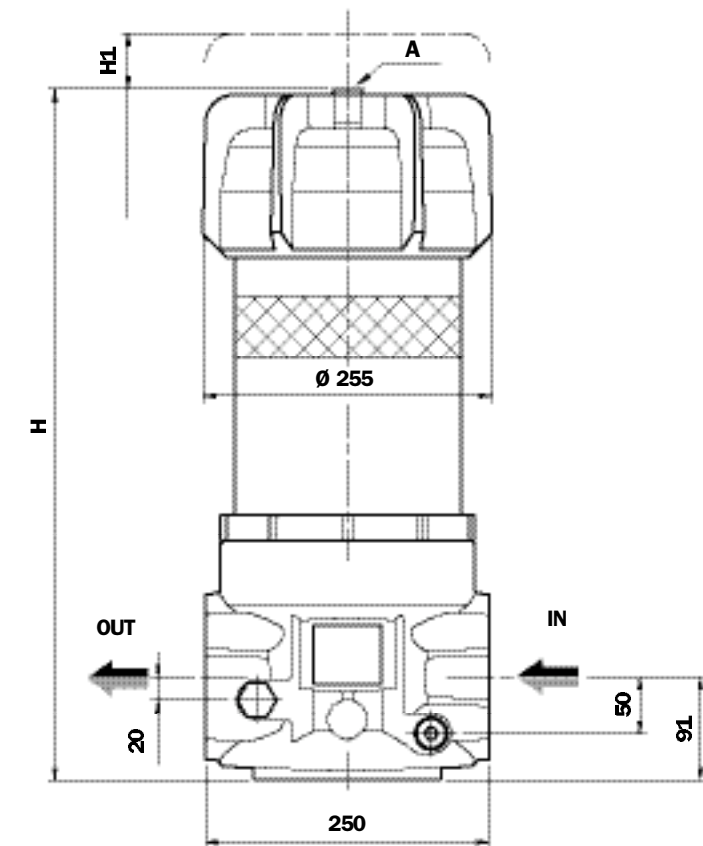
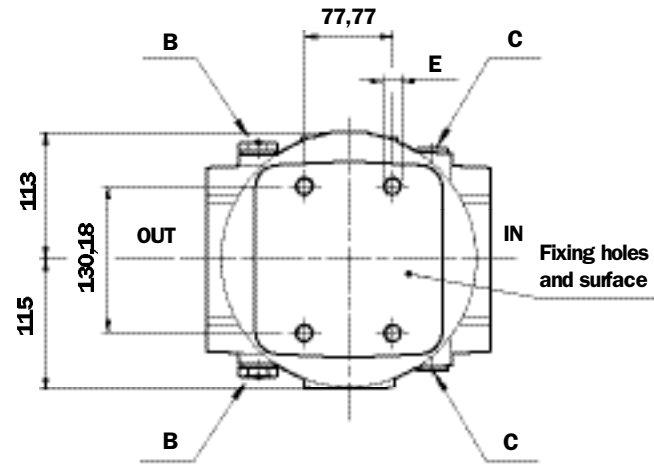
Oil velocity	Connections	
	3"	4"
2,5 m/sec.	750	1200
5 m/sec.	1500	2400

Flow rate l/min.

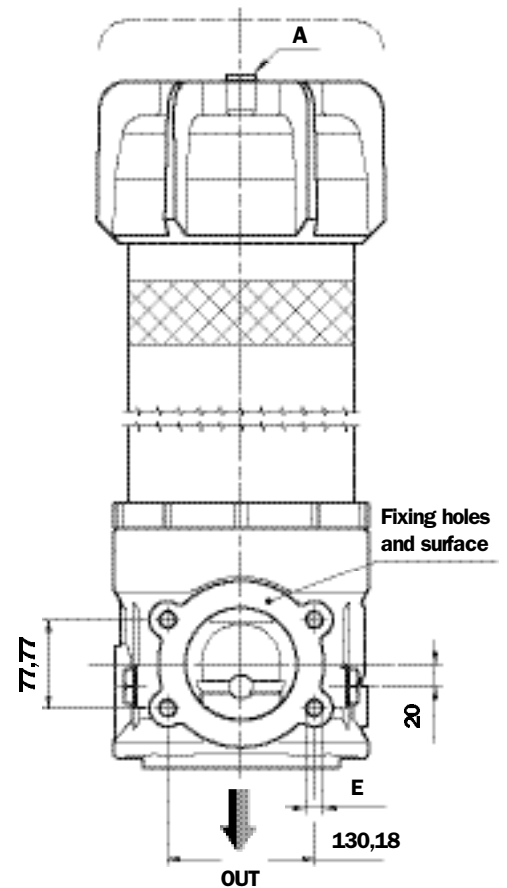
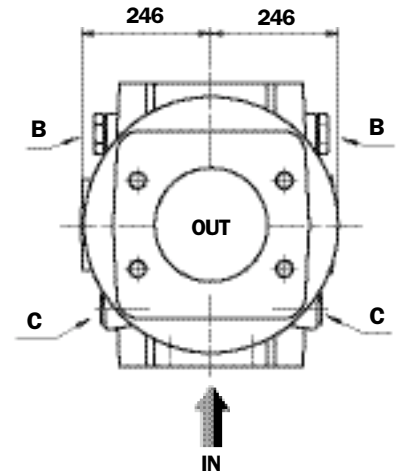
Off-Line filter, the recommended maximum pressure drop of exclusively the filter element must be equal to Δp 0.2 ÷ 0.3 bar.

Dimensions

LMP 950



LMP 951



Flanged IN/OUT connections

E
Depth 25 mm

3" SAE 3000 psi/M	M16
4" SAE 3000 psi/M	M16
3" SAE 3000 psi/UNC	5/8" UNC
4" SAE 3000 psi/UNC	5/8" UNC

Filter length

H
mm

H1
mm

2	680	350
3	1230	900

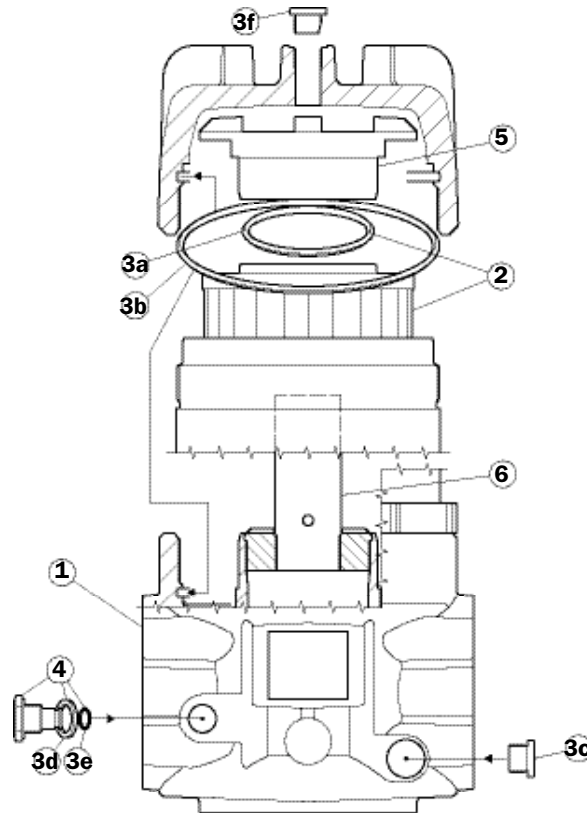
A Breather plug - G 1/2" - Ch. 10

B Indicator connection - Plug T2 - Ch. 30

C Oil drain plug - G 1/2" - Ch. 10

LMP 950/951 spare parts

Length 2 - 3



Pos.	Description	Qty	FILTER Series LMP 950/951 2 - 3	
1	Filter assembly	1	See order table	
2	Filter Element	1	See order table	
3	Seals kit	1	NBR 02050367	FPM 02050368
3a	Filter element O-Ring	2	OR 4412 Ø 104,37 x 3,53	
3b	O-Ring for housing	2	OR 6745 Ø 189,86 x 5,33	
3c	Oil drain plug	2	G 1/2" with seal	
3d	Bonded seal	2	01030058	01030046
3e	O-Ring	2	OR 2050 Ø 12,42 x 1,78	
3f	Breather plug	1	01029444	
4	Indicator connection plug LMP 950/951	2	T2H	T2V
5	Housing spigot	1	Spigot without By-pass 01044106 Spigot with By-pass 02001379	
6	Tube assembly	1	x L. 2 02025032 x L. 3 02025033	
-	Indicator	1	See order table	

LMP950/951 ordering information

Filter assembly LMP

Example: LMP

1	2	3	4	5	6	7	8 a
<input type="text"/>	<input type="text"/>	<input type="text"/>	<input type="text"/>	<input type="text"/>	<input type="text"/>	<input type="text"/>	<input type="text"/>
950	2	B	A	F1	A10	N	P01

Filter Element CU 950

Example: CU950

2	6	4	7	8 b
<input type="text"/>	<input type="text"/>	<input type="text"/>	<input type="text"/>	<input type="text"/>
2	A10	A	N	P01

1 - Sizes

950	LMP950 (in-line IN-OUT)
951	LMP951 (90° IN-OUT)

2 - Filter length

2
3

3 - Valves

S	Without by-pass
B	With by-pass

4 - Seals

A	NBR
V	FPM

5 - Connections

Type	
F1	3" SAE 3000 PSI/M
F2	3" SAE 3000 PSI/UNC
F3	4" SAE 3000 PSI/M
F4	4" SAE 3000 PSI/UNC

6 - Filter element

A03	3 µm	A16	16 µm	Absolute filtration Inorganic microfibre βx (c) ≥ 1000 see page 9
A06	6 µm	A25	25 µm	
A10	10 µm			
M25	25 µm	M90	90 µm	Nominal Filtration Metal mesh see page 9
M60	60 µm			

7 - Filter elements series

N	Δp 20 bar
W	Δp 20 bar (aqueous emulsions - water and glycol)

8 - Options

a - Filters

P01	MP Standard filter
P02	With internal tube for reduced flow rate
Pxx	Customer request

b - Filter elements

P01	MP Standard filter
Pxx	Customer request

DIFFERENTIAL INDICATORS (see page 12)

MP Filtri - The filter functions as described in this bulletin are valid exclusively for original MP Filtri filter elements and replacement parts. All rights reserved

The data in this publication are purely guideline. MP Filtri reserves the right to make changes to the models described herein at any time it deems fit in relation to technical or commercial requirements. The colours of the products shown on the cover are purely guideline. Copyright. All rights reserved.